



## SCHOOL REVIEW PROCESS

### Impact Assessment Report Gertrude M. Parker Elementary School

For more information, please contact: Jill McGillicuddy, 464-2000 ext.2277

## TABLE OF CONTENTS

1.0 Introduction	4
2.0 School Information	5
2.1 School Name	5
2.2 School Configuration	5
2.3 School Location	5
2.4 Administration	5
2.5 Population Patterns	5
2.5.1 Projection Methodology	5
2.5.2 Halifax Regional Municipality Historical and Projected Population	6
2.5.3 Eastern Central HRM Planning Area Historical and Projected Population	7
2.6 Enrolment	9
2.6.1 Historical and Projected Enrolment for HRSB 1998/1999 to 2017/2018	9
2.6.2 Sackville High Family Historical and Projected Enrolment by Grade	10
2.6.3 Gertrude Parker Elementary School Historical and Projected Enrolments	10
2.6.4 Gertrude Parker Elementary School In and Out of Boundary Details	10
2.6.5 Gertrude Parker Elementary School Registered Enrolment for September 2010	11
2.7 Capital Construction Planning	
2.7.1 Halifax Regional Municipality Regional Plan	11
2.7.2 HRM Facility Master Plan	12
2.7.3 Community Visioning	12
2.7.4 Proposed Development	12
2.8 Physical Condition of Building	
2.8.1 Condition of Building Envelope, Interior and Systems	12
2.8.2 Indoor Air Quality and Environmental Issues	12
2.8.3 Costs Associated with Maintenance, Repair and Operation	13
2.8.4 Barrier Free Accessibility to Building and Grounds	13
2.9 Building Use	
2.9.1 Floor plan	14
2.9.2 Building Details	17
2.9.3 Teaching Spaces and Current Usage	17
2.9.4 Excess Teaching Spaces	17
2.9.5 Gertrude Parker Elementary School Boundary	18
3.0 Impact Analysis	
3.1 Capability to Deliver Public School Program	20
3.1.1 Facility Program Delivery Review	20
3.1.2 Public School Programming	21
3.2 Educational Benefits	22
3.3 Transportation	22
3.4 Extra-Curricular Activities	22
3.5 Operational and Capital Requirements	
3.5.1 Completed Capital Projects at Gertrude Parker	23
3.5.2 Immediate Operating Needs (5 years)	23
3.5.3 Capital Investments on Current Building	23
3.5.4 Capital Needs to Upgrade	23
3.6 Property Service Efficiencies	23
3.7 Impact on the Community	24

3.8 Community Use of the School	24
3.9 Impact of Potential Consolidation (if applicable)	24
4.0 Proposed Receiving School Information	
4.1 School Name	25
4.2 School Location	25
4.3 Administration	25
4.4 Enrolment	
4.4.1 Cavalier Drive School Historical and Projected Enrolments	25
4.4.2 Cavalier Drive School In and Out of Boundary Details	25
4.4.3 Cavalier Drive School Registered Enrolment for September 2010	26
4.4.4 Impact of the Review Outcome on Cavalier Drive School	26
4.5 School Configuration	27
4.6 Physical Condition of the Building	
4.6.1 Facility Utilization	27
4.6.2 Condition of Building Structure and Systems	27
4.6.3 Costs Associated With Maintenance and Operation	27
4.6.4 Operation and Availability of Accessibility Ramps, Elevators, Accessible Playgrounds	27
4.7 Building Use	
4.7.1 Excess Space	27
4.7.2 Teaching Spaces and Current Usage	28
4.7.3 Impact of Increased Number of Students on Building Usage	28
4.8 Transportation	28
4.9 Proposed Attendance Boundary	29

### **Supplementary Information**

Building Audit and Expenditure Plan - Gertrude Parker and Cavalier Drive  
Halifax Regional School Board Facilities Master Plan (pending approval - tabled March 2011)  
Halifax Regional Municipality Regional Plan  
Halifax Regional Municipality Facilities Master Plan

## 1.0 INTRODUCTION

Recently, the Halifax Regional School Board has undertaken a 10 year facility master planning process which resulted in a staff report and recommendations which were presented to the Governing Board in February 2010 (<http://www.hrsb.ns.ca/files/Downloads/pdf/reports/2009-2010/February/10-01-1236.pdf>). The Governing Board requested the facility master plan be prepared and presented in smaller components.

**It was moved and seconded (Conrod/Finlayson) that the Board request staff to develop an approach or process that would divide the capital construction master plan into more manageable components---for example, area-by-area or family-by-family, and that staff review this approach or process, including a timeline, with the Board before it begins.**

**(CARRIED)**

During the 2010-2011 school year, staff prepared a facility master plan that is divided by family of schools. The plan outlines the historical information, demographics, feeder system – existing and proposed, and requested capital project for each area. The staff report and proposed facility master plan was tabled at the Board meeting of March 30, 2011.

The Capital Plan has identified a number of schools that should be considered for review as part of the ongoing planning process. Catchment areas that are experiencing enrolment decline provide opportunities to consolidate populations into existing infrastructure, renovated or replacement schools.

Gertrude Parker Elementary School has been identified for possible consolidation with Cavalier Drive School. The potential receiving school, Cavalier Drive, would not require capital improvements to accommodate the potential student population; however, a grade reconfiguration from P-9 to P-6 is recommended in the proposed Facilities Master Plan.

The information in this report has been compiled in accordance with Provincial school review regulations and outlines information for the School Review Committee to consider regarding possible impacts of the Gertrude Parker Elementary School review.

## 2.0 SCHOOL INFORMATION

### 2.1 SCHOOL NAME

Gertrude Parker Elementary

### 2.2 SCHOOL CONFIGURATION

Primary to Grade 6

Regular Program and Early French Immersion

### 2.3 SCHOOL LOCATION

100 Stokil Drive

Lower Sackville, NS B4C 2G5

### 2.4 ADMINISTRATION

Principal: Brian Toner

Vice Principal: Kara MacGillivray

### 2.5 POPULATION PATTERNS

#### 2.5.1 Projection Methodology

##### **Paradigm Shift Inc.**

Currently, the Board has the advantage of reviewing projections as prepared by two demographic systems. The Imagine Our Schools consultants submitted projected demographics as prepared by Paradigm Shift Inc. The methodology that was applied included the cohort-survival method combined with the residual method.

The cohort survival method applies historical census data and projects future population based on assumptions about births, deaths, and migration. The residual method is derived from a calculation of population between two points in time for which population data is available using the Cohort Survival Method. Additionally, the consultants worked closely with the Halifax Regional Municipality in determining approved/potential development areas.

##### **Baragar Demographics**

The Halifax Regional School Board has purchased planning software from Baragar Demographics and as part of the licensing agreement, the company provides the Board with projections for each school on a yearly basis.

Baragar Demographics applies a similar methodology as Paradigm Shift Inc. Their data analysis includes:

- Analysis of yearly birth records;
- Determining the number of children who reside in a boundary by accessing the Universal Child Care Benefit tax records and Canada Child Tax Benefit records on a yearly basis;
- Applying census information such as women of child bearing years, generally in the age cohorts of 25-29, 30-34, and 35-39; and
- Applying a historical migration rate (+/-) of the boundary.

Upon comparison, the projections as prepared by each company are relatively close. Paradigm Shift has not been asked for updated projections since 2009, resulting in stale-dated data in later years. Baragar Demographics provides yearly projections and as such is the projection software package that will be utilized on a go forward basis.

## 2.5.2 Halifax Regional Municipality Historical and Projected Population

### Historical

- The total population of Halifax Regional Municipality (HRM) increased by 8.8% from 1996 to 2006; however, during this same period the age 5 to 19 population decreased by 0.9%.
- The age 0 to 4 population decreased significantly from 6.6% of the total population in 1996 to 4.9% of the total population in 2006.

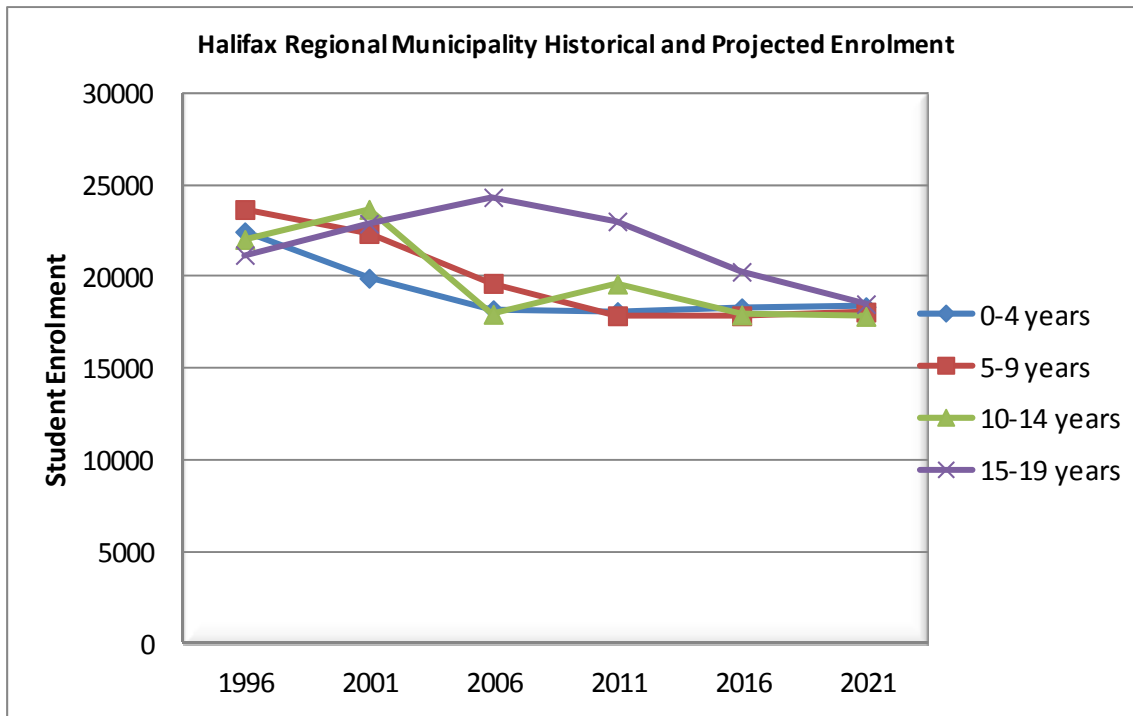
### Projected

- The age 5 to 19 population comprised of 17.8% of the total population in 2006 with this value is estimated to steadily decline to 13.4% in 2021.
- The age 5 to 19 population will continue to decrease resulting from the lower age 0 to 4 population that will move into the older age cohorts.
- The age 0 to 4 population is expected to remain stable due to a projected value of approximately 3800 live births per year.

### Halifax Regional Municipality Historical and Projected Population

Age Cohort	1996	2001	2006	2011	2016	2021
0 to 4	22,460	19,925	18,205	18,104	18,311	18,368
5 to 9	23,675	22,365	19,645	17,957	17,873	18,080
10 to 14	22,040	23,685	22,325	19,608	17,924	17,842
15 to 19	21,190	22,905	24,340	23,025	20,274	18,510
20 to 24	25,570	26,560	28,120	29,842	28,868	25,938
25 to 29	27,950	26,440	26,015	27,578	29,262	28,261
30 to 34	33,195	27,600	25,850	25,461	27,025	28,676
35 to 39	31,980	32,850	27,405	25,677	25,294	26,852
40 to 44	28,080	31,645	32,745	27,336	25,601	25,214
45 to 49	25,765	28,070	31,565	32,675	27,327	25,569
50 to 54	19,075	25,525	28,235	31,741	32,913	27,674
55 to 59	14,155	18,335	25,065	27,778	31,229	32,402
60 to 64	12,305	13,670	18,235	24,898	27,819	31,262
65 to 69	10,595	11,840	13,210	17,525	23,918	26,896
70 to 74	9,415	9,715	11,010	12,327	16,254	22,172
75 to 79	7,055	8,060	8,560	9,677	10,854	14,197
80 to 84	4,610	5,535	6,475	6,924	7,771	8,719
85 to 89	2,325	2,880	3,735	4,420	4,758	5,301
90 and over	1,230	1,505	1,935	2,476	3,014	3,400
<b>Total Population</b>	<b>342,670</b>	<b>359,110</b>	<b>372,675</b>	<b>385,029</b>	<b>396,289</b>	<b>405,333</b>

Sources: Statistics Canada (historical), Environmental Design and Management Ltd.  
 Figures do not include Census under-count.



### 2.5.3 Central HRM Planning Area Historical and Projected Population

#### Historical Population

- The total population of the Eastern Central HRM planning area increased by 5.8% from 1996 to 2006.
- During this same period the age 5 to 19 population decreased by 2.8%.
- The age 0 to 4 population decreased by 23.3% in the same time frame.

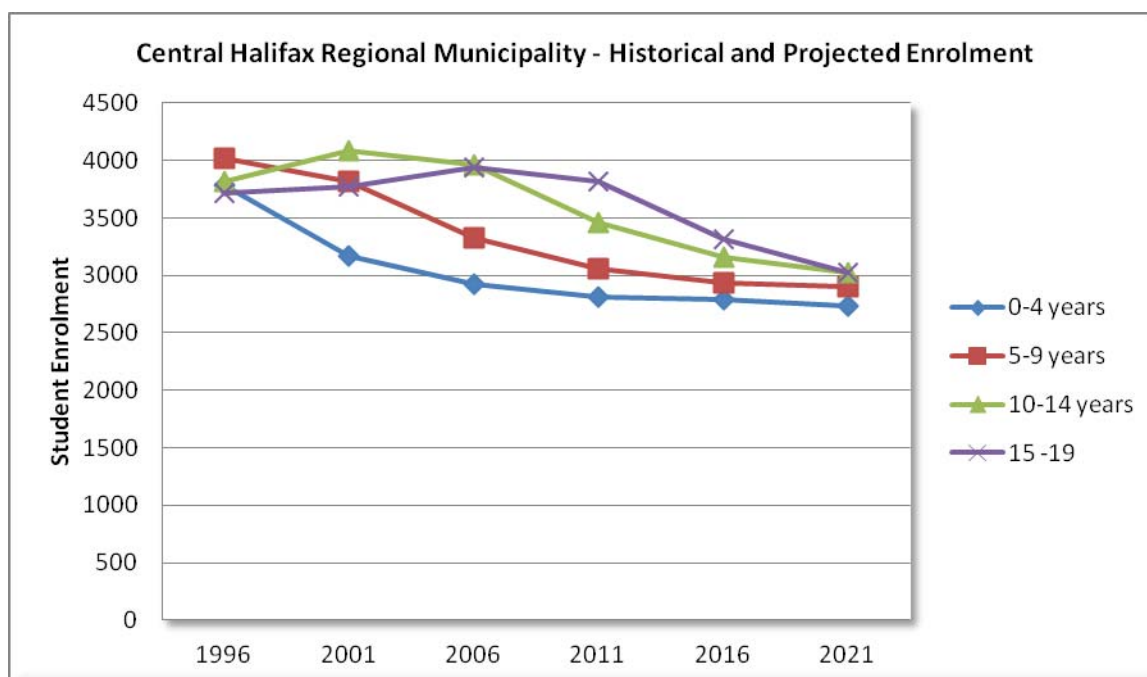
#### Projected Population

- The age 5 to 19 population comprised 19.5% of the total population in 1996 and remained relatively steady at 18.4% of the total population in 2006. This value is estimated to steadily decline to 13.4% in 2021.

**Central Halifax Regional Municipality (Lockview High, Millwood High, and Sackville High Families of Schools)  
Historical and Projected Population**

Age Cohort	1996	2001	2006	2011	2016	2021
0 to 4	3,780	3,175	2,925	2,817	2,793	2,731
5 to 9	4,015	3,820	3,325	3,056	2,933	2,907
10 to 14	3,820	4,085	3,965	3,455	3,154	3,022
15 to 19	3,715	3,775	3,945	3,813	3,313	3,019
20 to 24	3,220	2,925	2,845	3,019	2,835	2,352
25 to 29	3,325	2,845	2,680	2,625	2,803	2,596
30 to 34	4,920	3,730	3,495	3,294	3,252	3,433
35 to 39	4,845	5,055	4,240	3,922	3,690	3,652
40 to 44	4,295	4,730	5,100	4,280	3,939	3,709
45 to 49	4,175	4,165	4,670	5,025	4,201	3,860
50 to 54	2,965	3,920	3,945	4,433	4,755	3,923
55 to 59	1,845	2,735	3,660	3,626	4,095	4,369
60 to 64	1,305	1,715	2,670	3,574	3,567	4,014
65 to 69	910	1,215	1,610	2,503	3,362	3,365
70 to 74	645	795	1,065	1,419	2,208	2,963
75 to 79	445	570	625	843	1,131	1,768
80 to 84	275	305	405	432	584	786
85 to 89	80	120	185	240	250	334
90 and over	40	60	90	135	180	203
<b>Total Population</b>	<b>48,620</b>	<b>49,740</b>	<b>51,445</b>	<b>52,511</b>	<b>53,045</b>	<b>53,006</b>

Sources: Statistics Canada (historical), Environmental Design and Management Ltd (projected).  
Figures do not include Census under-count.



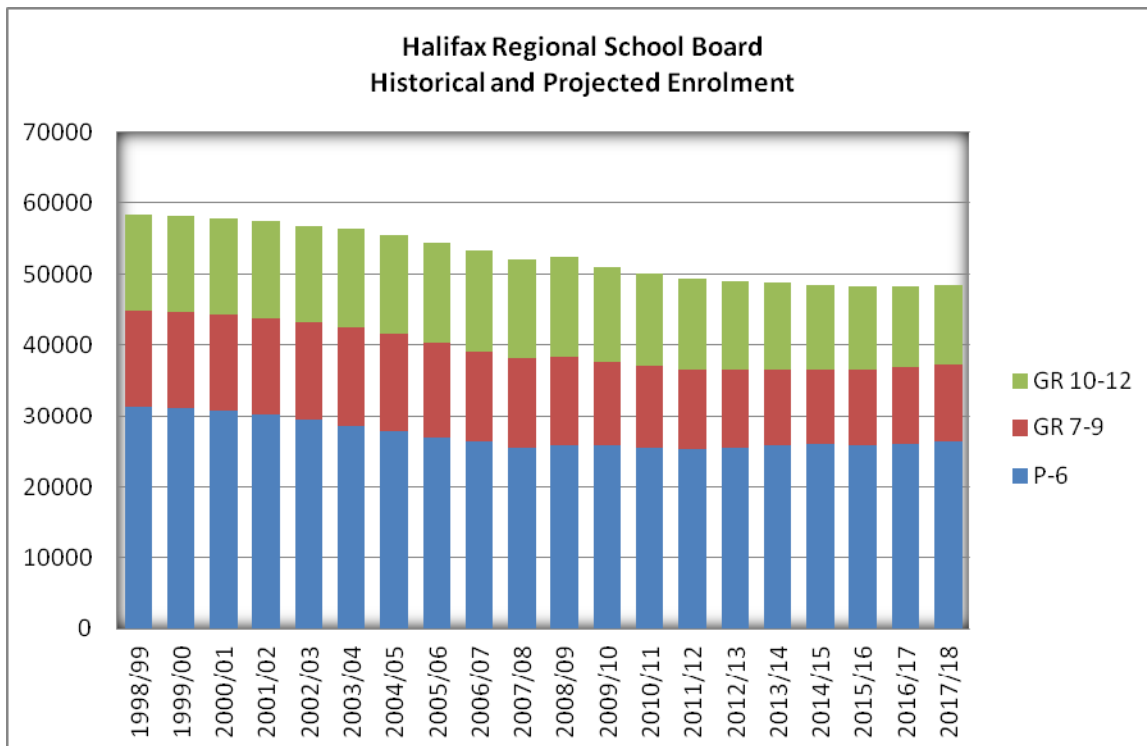
## 2.6 ENROLMENT

Enrolment projections are based upon the Cohort-Survival Method, which uses historical grade by grade enrolment to estimate a grade by grade projection for each program offered at a school. This method uses trends to identify the progression of students from one grade to the next higher grade. Other data sources, including historical migration rates (+/-) of the catchment area, analysis of out-of-area students, feeder school analysis, and an analysis of the Universal Child Benefit tax record and Canada Child Tax Benefit Tax records on a yearly basis are used to supplement the Cohort-Survival Method projections.

### 2.6.1 Historical and Projected Enrolment for HRSB 1998/1999 to 2017/2018

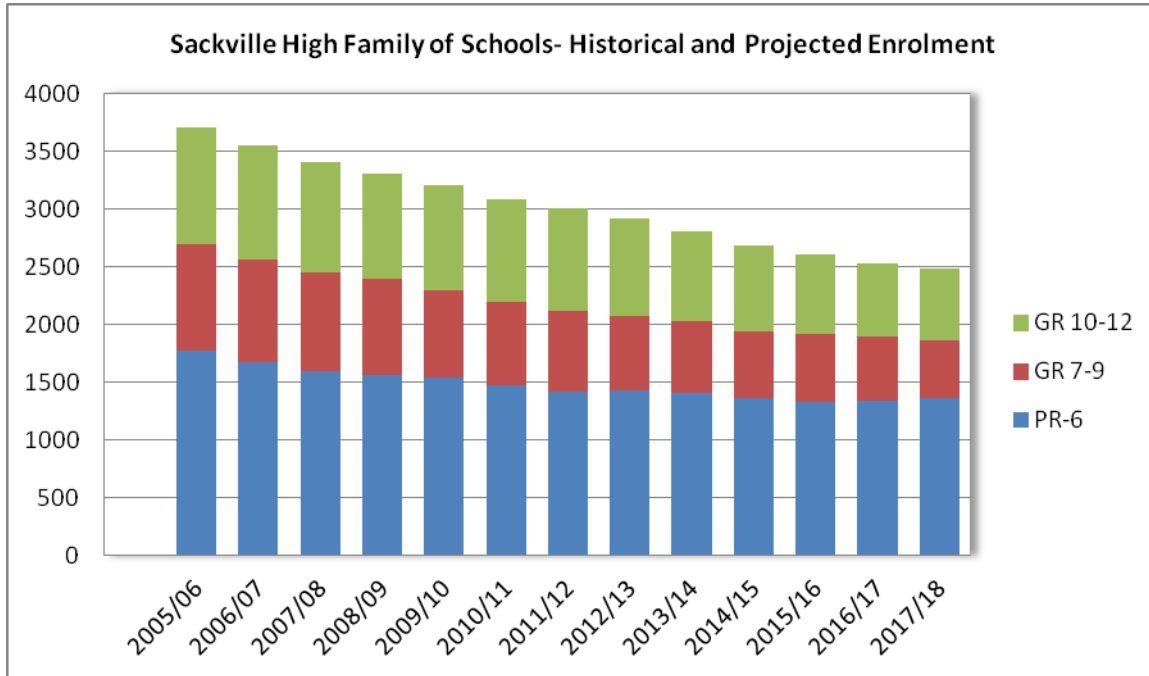
Over the past ten years, the total student enrolment in the Halifax Regional School Board has shown a steady decline. As of 2010/2011 enrolment has decreased by 8,128 students from the total enrolment of 58,297 in 1998/1999.

Over the next five to seven years, enrolments are estimated to continue to marginally decline with the most significant decline having occurred. The construction of new housing and a positive migration rate have helped mitigate some of the decline that has occurred during the past ten years. The projections indicate a decrease of approximately 1700 students from the registered enrolment of September 2010 to the projected enrolment of 2017.



### 2.6.2 Sackville High Family of Schools Enrolment by Grade

The following charts outline the historical enrolment and the projected enrolment in Sackville High Family of Schools. According to this data the total enrolments will continue to significantly decline.



### 2.6.3 Gertrude Parker Elementary School Historical and Projected Enrolments

Gertrude Parker Elementary School provides regular programming for grades primary to six as well as Early French immersion programming for grades primary to six.

Actual enrolments are given through 2010 and projected enrolments are provided through 2015. Projections provided by Baragar Demographics.

#### Historical and Projected Enrolments of Gertrude Parker Elementary School

	2005	2006	2007	2008	2009	2010	2011	2012	2013	2014	2015
Primary	38	35	40	46	42	34	35	34	37	40	40
One	40	41	37	45	45	38	32	33	32	35	37
Two	47	39	39	39	42	42	35	30	30	29	34
Three	38	46	42	37	33	44	42	37	31	31	33
Four	52	38	40	38	30	35	41	40	35	28	27
Five	35	51	39	41	35	30	31	41	38	33	28
Six	37	38	43	40	42	38	30	34	40	38	29
<b>Total</b>	<b>287</b>	<b>288</b>	<b>280</b>	<b>286</b>	<b>269</b>	<b>261</b>	<b>250</b>	<b>249</b>	<b>244</b>	<b>234</b>	<b>230</b>

Source: Halifax Regional School Board and Baragar Demographics

### 2.6.4 G Elementary School In and Out of Boundary Details

#### Students attending Gertrude Parker – September 2010

- 140 students living within Gertrude Parker Elementary School Boundary
- 121 students living in other elementary school boundaries
- Total of 261 students attending Gertrude Parker Elementary as of September 30, 2010

### Students living in the Gertrude Parker Boundary – September 2010

- 140 students from the Gertrude Parker Elementary School Boundary attend the school as of September 30, 2010
- 11 students from the Gertrude Parker Elementary School Boundary attend other schools as of September 30, 2010

### 2.6.5 Gertrude Parker Elementary School Registered Enrolment for September 2011

The following registered enrolments for September 2011 are accurate as of April 30, 2011. The actual September 30, 2011 enrolments will be provided to the School Review Committee in October 2011.

Grade	Enrolment as of April 30, 2011
Primary	30
One	32
Two	35
Three	35
Four	41
Five	35
Six	28
Total	236

## 2.7 CAPITAL CONSTRUCTION PLANNING

### 2.7.1 Halifax Regional Municipality Regional Plan

Gertrude Parker Elementary School and its catchment area are designated Urban Settlement in the HRM Regional Municipal Planning Strategy. The designation includes developed and undeveloped lands and includes six sites as potential areas for new urban growth.

Within each designation, there are a series of mixed use transit oriented centres. The Gertrude Parker catchment area is located in the suburban local centre. Permitted land uses in the suburban local centre include a mix of low to medium density residential and convenience commercial uses. In established neighbourhoods, low to medium density residential uses would be encouraged.

The HRM Regional Plan states that approximately 25% of the growth in the next 25 years will be targeted to occur in the Regional Centre; approximately 50% of the growth will occur in the suburban areas; and the remaining 25% will occur within the rural areas.

During the development of the Regional Plan, HRM had a demographic study prepared by Clayton Research. They found that the projected housing demand by type from 2001-2026 for the Suburban region to be:

Single and Semis:	18,851
Row:	735
Apartments and others:	11,013
Total:	30,599

## **2.7.2 HRM Facility Master Plan**

The Communities Facilities Master Plan (CFMP) was approved in principle in May 2008. The objective of the CFMP is to specifically indicate where facilities will be constructed; which existing facilities will be improved; and joint school use agreements and partnerships for community facilities throughout HRM over the next 20 years.

The Municipality has indicated the Sackville area is well serviced and should Gertrude Parker Elementary School be closed, the site would not be considered for community use. Should this site be returned to the Municipality, the real estate division of transportation public works would initiate a formal assessment regarding future use of the building and site.

## **2.7.3 Community Visioning**

HRM has been undertaking visioning exercises to further develop ideas for identified growth centres within the HRM Regional Plan. To date, the visioning process has not been initiated for the Lower Sackville area.

## **2.7.4 Proposed Development**

HRM Planning and Development Services have provided the following development numbers for the Gertrude Parker and Cavalier Drive catchment areas:

- July 2009 – June 2011 – no residential building permits have been issued ; and
- Anticipated development (in process, not approved) – none.

## **2.8 PHYSICAL CONDITION OF BUILDING**

### **2.8.1 Condition of Building Envelope, Interior and Systems**

A complete Building Audit and Expenditure Plan has been completed for Gertrude Parker Elementary School and will be provided to the School Review Committee. The intent of the document is to provide a review of the existing building and to provide a capital building estimate that would be required for the continued operation of the school. The report concludes that an investment in capital of approximately \$825,365 is required to ensure the future use of the building.

### **2.8.2 Indoor Air Quality and Environmental Issues**

The review Committee will be provided with any past investigations and reports and regarding indoor air quality and environmental issues at Gertrude Parker Elementary School.

### 2.8.3 Costs Associated with Maintenance, Repair and Operation

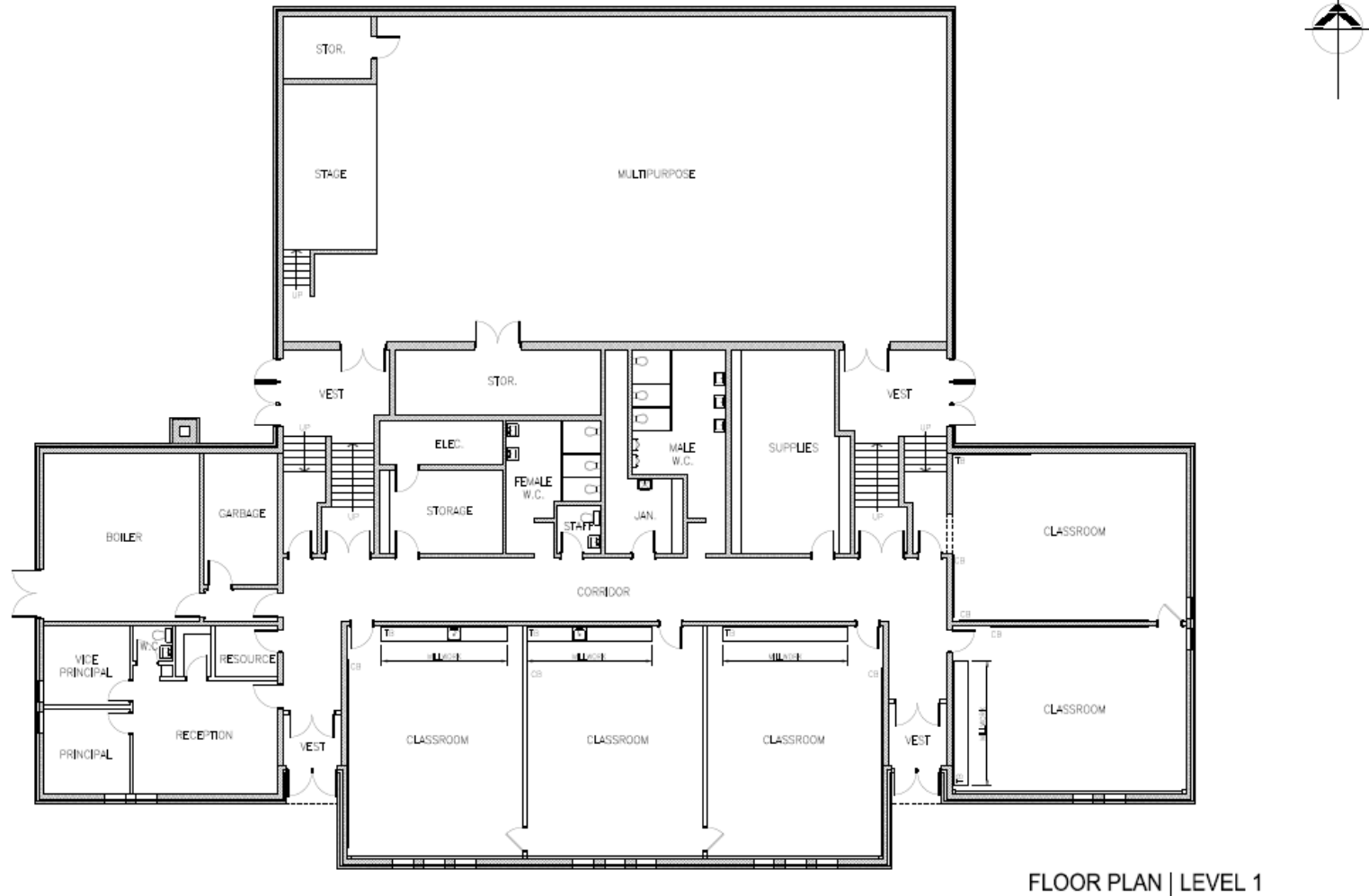
<b>Costs</b>	<b>2009/2010</b>	<b>2010/2011</b>
Utilities		
Phone	\$4,056.00	\$4,056.00
Power	\$18,969.64	\$14,752.79
Fuel	\$10,830.63	\$7,900.90
Water	\$12,896.18	\$13,182.59
Maintenance	\$11,952.46	\$12,252.46
Caretaker and Supplies	\$82,673.57	\$85,750.03
<b>Total</b>	<b>137,327.04</b>	<b>137,894.77</b>

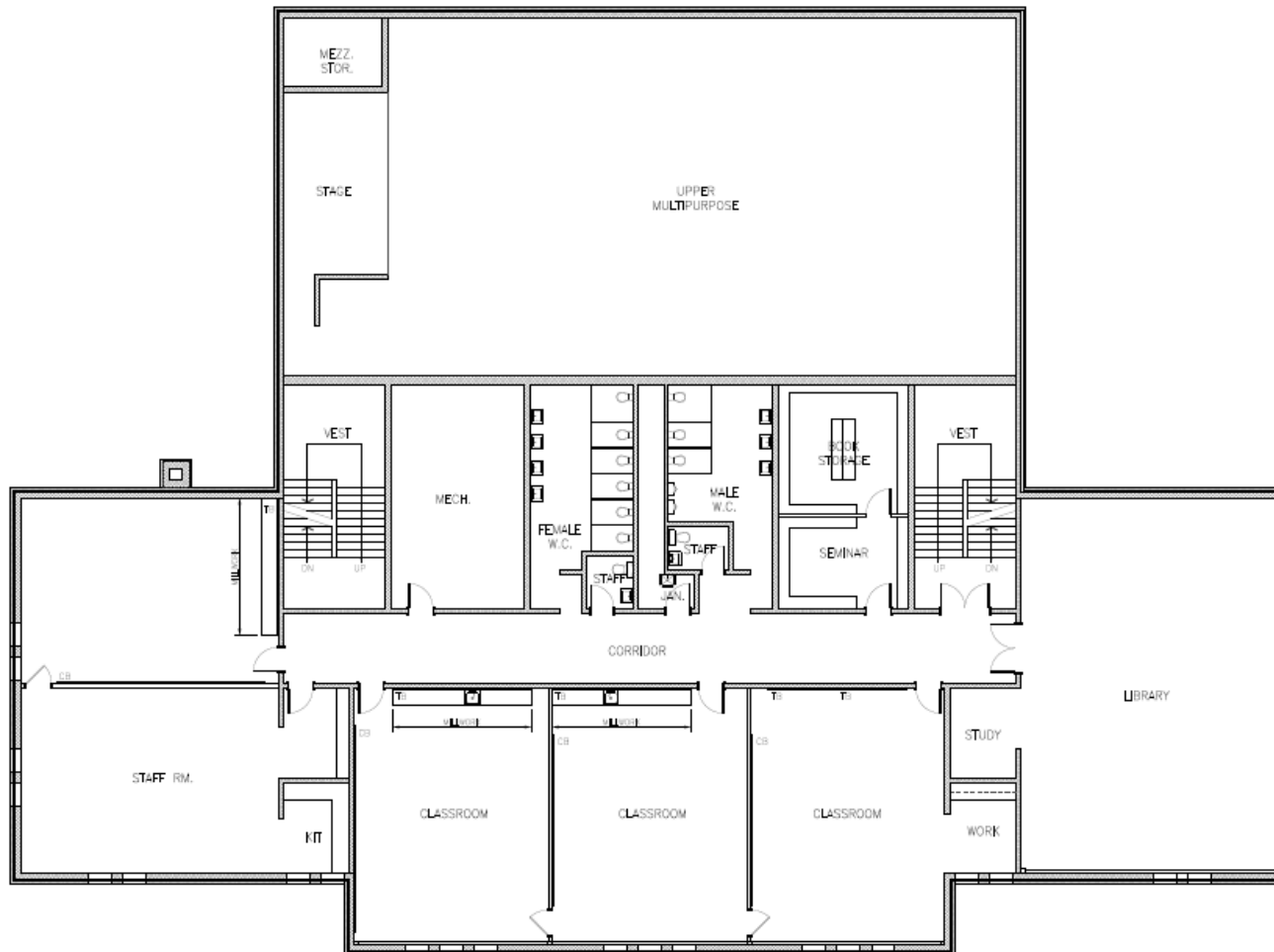
### 2.8.4 Barrier Free Accessibility to Building and Grounds

Please refer to the Building Audit and Expenditure Report.

## 2.9 BUILDING USE

### 2.9.1 Floor plan





FLOOR PLAN | LEVEL 2

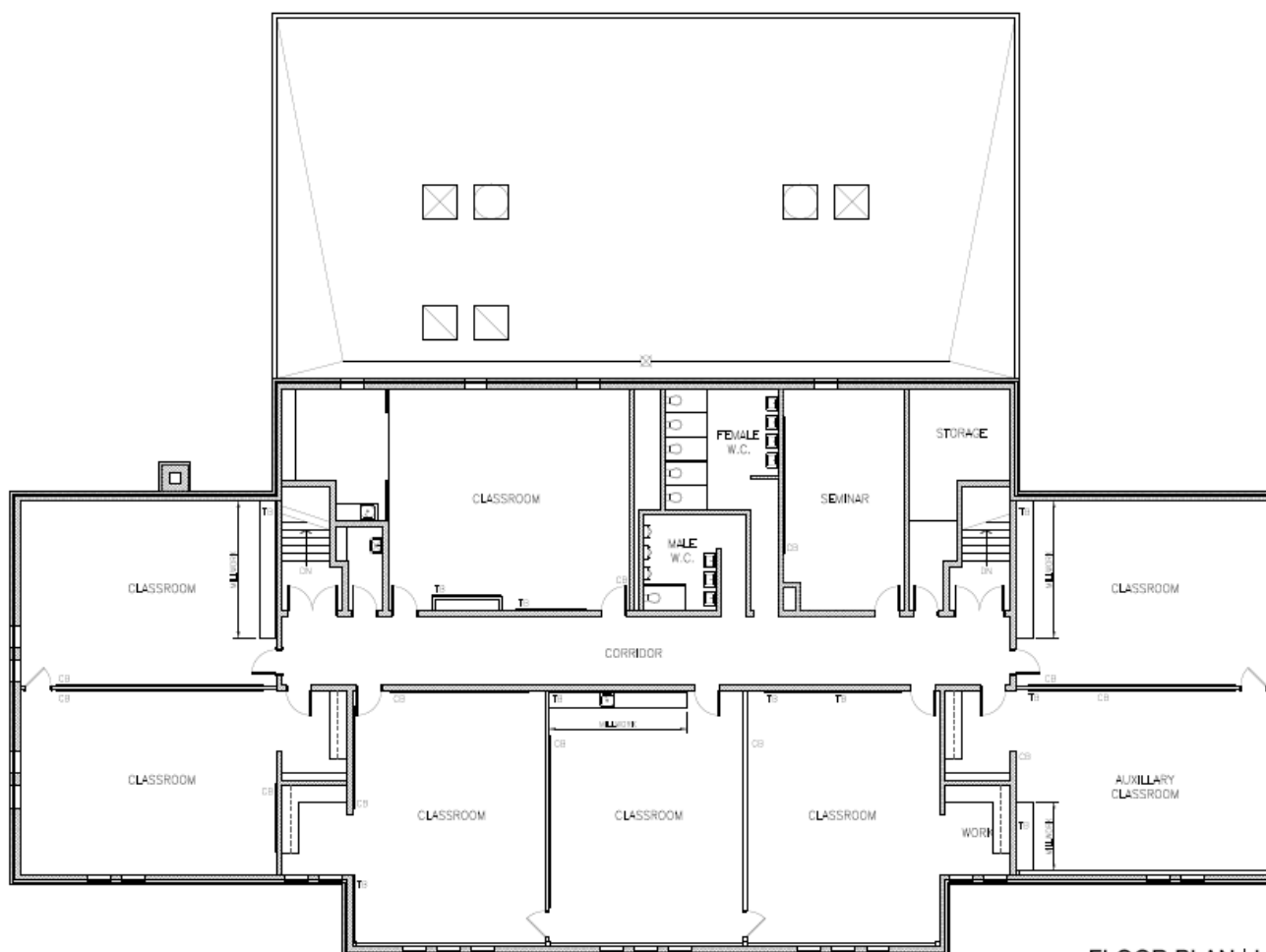


Fowler Bauld & Mitchell Ltd.  
 PO Box 514, Suite 102  
 1660 Hollis Street, Halifax, Nova Scotia B3J 2R7  
 Tel: 902 429 4100 Fax: 902 423 3063  
 email: architects@fbm.ns.ca www.fbm.ns.ca

**GERTRUDE PARKER**  
 LOWER SACKVILLE, NOVA SCOTIA

May 2011  
 Project No. 2011-026

A-



FLOOR PLAN | LEVEL 3



Fowler Bauld & Mitchell Ltd.  
PO Box 514, Suite 102  
1660 Hollis Street, Halifax, Nova Scotia B3J 2R7  
Tel: 902 429 4100 Fax: 902 423 3063  
email: architects@fba.ca www.fba.ca

GERTRUDE PARKER  
LOWER SACKVILLE, NOVA SCOTIA

May 2011  
Project No. 2011-026

A-

### 2.9.2 Building Details

Gross building square footage: 27,682

No. of storeys: 3

Building Age: 1974

Accessibility: Ramp

Elevator (Y/N): No

### 2.9.3 Teaching Spaces and Current Usage

Room	Intended Use	Current Use
<b>Ground Floor</b>		
Classroom 101	Classroom	Classroom*
Classroom 102	Classroom	Classroom*
Classroom 103	Classroom	EXCEL Lunchroom*
Classroom 104	Classroom	Classroom*
Classroom 105	Classroom	Classroom*
Gym/Assembly Hall	Gym/Assembly Hall	Gym/Assembly Hall**
<b>First Floor</b>		
Classroom 201	Classroom	Learning Centre**
Staffroom	Staffroom	Staffroom
Classroom 202	Classroom	Classroom*
Classroom 203	Classroom	Classroom*
Classroom 204	Classroom	Classroom*
Library	Library	Library**
Supply Room	Supply Room	Supply Room/Meeting Room
<b>Second Floor</b>		
Classroom 301	Classroom	Classroom*
Classroom 302	Classroom	Classroom*
Classroom 303	Classroom	Classroom*
Classroom 304	Classroom	Classroom*
Classroom 305	Classroom	Classroom*
Classroom 306	Classroom	Core French**
Classroom 307	Classroom	Music**
Classroom 309	Classroom	EXCEL Lunchroom*

\* denotes a room that was considered as classroom space.

\*\* denotes a room that was not considered as a specialty area (i.e. Music).

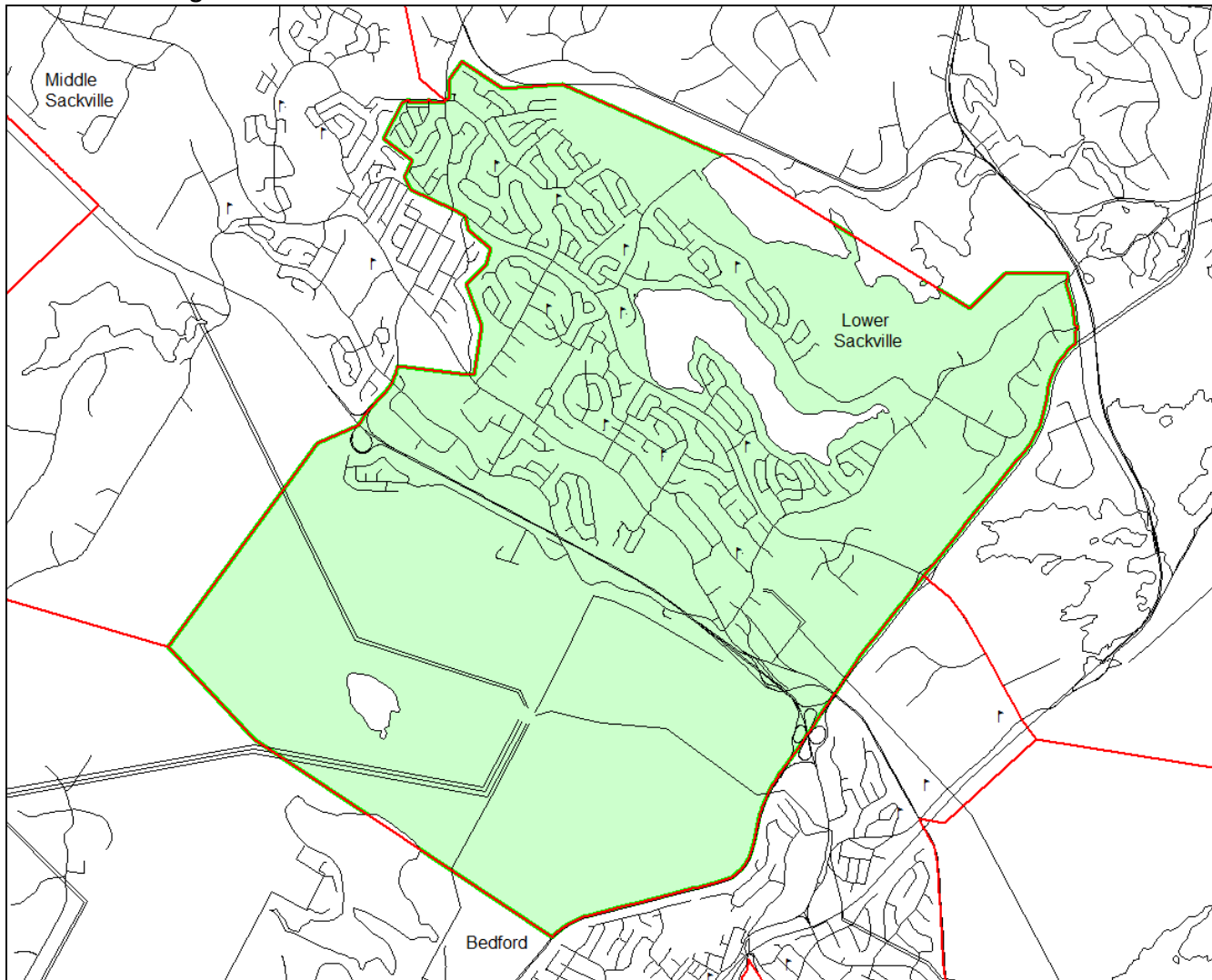
### 2.9.4 Excess Teaching Spaces

Gertrude Parker has 14 classroom spaces and 5 specialty spaces available (Gym, Learning Centre, Library, Core French and Music).

Under the attached classroom configuration, Gertrude Parker requires 12 of the 14 available classroom spaces, leaving two classroom spaces available for other uses (i.e. Resource, EXCEL, etc.).

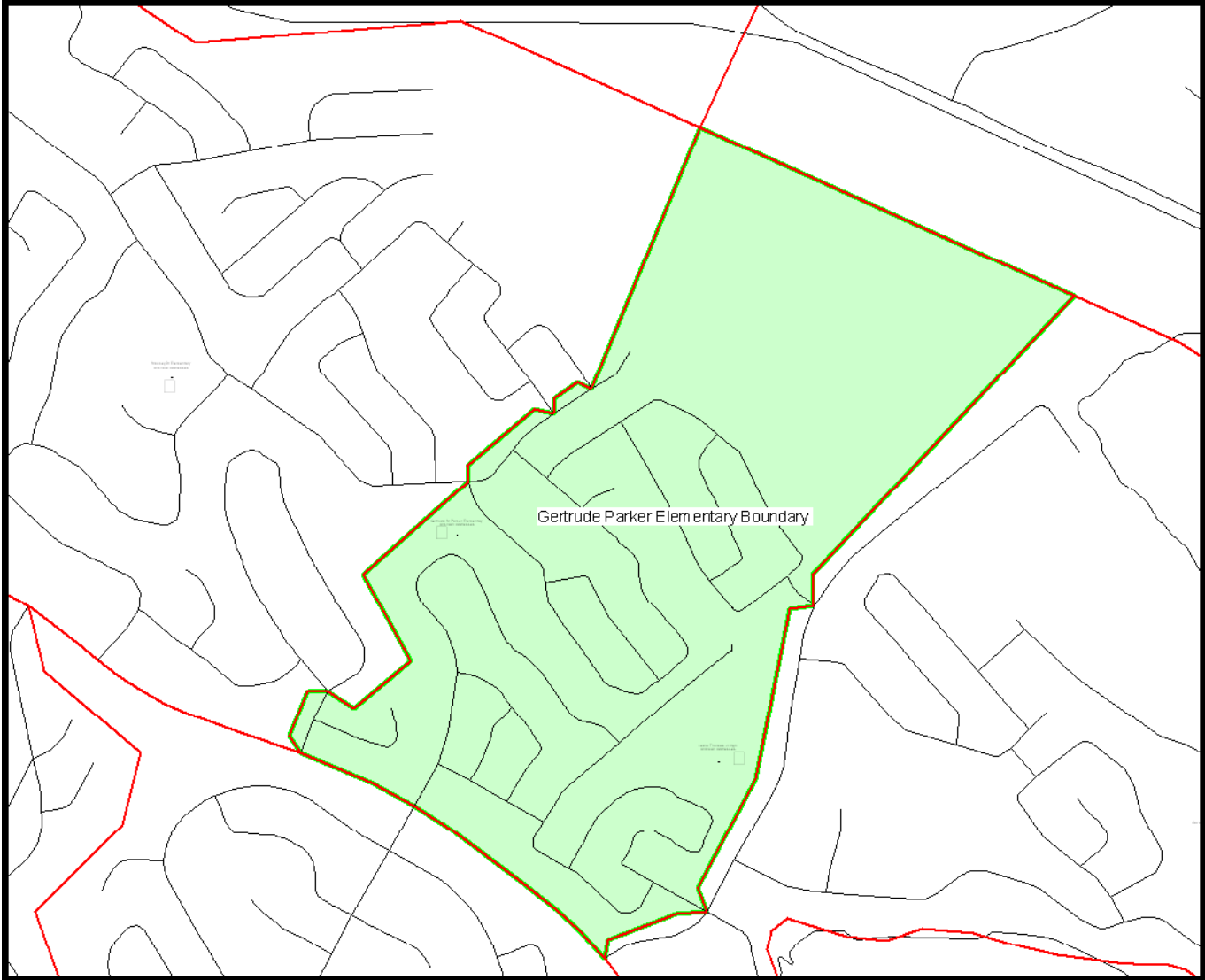
## 2.9.5

### Sackville Planning Area



Source: Halifax Regional School Board and Baragar Demographics

**Existing Gertrude Parker Boundary**



Source: Halifax Regional School Board and Baragar Demographics

### 3.0 IMPACT ANALYSIS

#### 3.1 CAPABILITY TO DELIVER PUBLIC SCHOOL PROGRAM

##### ABILITY AS A FACILITY TO DELIVER THE PUBLIC SCHOOL PROGRAM

Facility Program Delivery Review is a term used to define how well an educational facility serves the academic program being offered. It does not refer to the quality of the school’s academic programs or the success of its students measured by test scores. A Facility Program Delivery Review does not reflect the state of the physical plant of the building for architectural, structural, mechanical or electrical conditions.

A Facility Program Delivery Review was conducted by the consultants for all schools in the Imagine Our Schools planning process.

#### Facility Program Deliver Review Results for Gertrude Parker Elementary School

Facility Program Delivery Review Observations					
	Poor	Fair	Average	Above Average	Excellent
<b>Site Condition</b>					
<b>Educational Areas</b>					
Classrooms					
Other Instructional Areas					
Library					
Gymnasium					
<b>Support Areas</b>					
Administration/Student Services					
Cafeteria/Food Services (none)					

### 3.1.2 Public School Programming

The following are details regarding Gertrude Parker’s ability to deliver the public school program based on data from June 30, 2011. It is noted that Gertrude M. Parker Elementary School is currently delivering the public school program as mandated by the Province.

- Pupil-Teacher Ratio = 20.2:1 (enrolment divided by classroom teachers only)
- Pupil-Staff Ratio = 14:1 (enrolment divided by all NSTU staff assigned to the school which includes Principals, Vice Principals, Circuit Teachers, Student Services Staff, ESL, Reading Recovery, Math Mentors, etc.)
- Enrolment: 242
- Total Classes: 12
- Number of Combined Classes: 5
- Class sizes:

#### English Program – Elementary

Primary/ Grade 1	Grade 1/2	Grade 3	Grade 4	Grade 5	Grade 6
14/5	9/10	18	16	23	20

#### French Immersion Program – Elementary

Primary	Grade 1	Grade 2	Grade 3/4	Grade 4/5	Grade 5/6
19	19	21	16/9	10/10	8/15

Program	Program Delivery Comments
General Classroom Program	Program is being delivered effectively.
Physical Education	Program is being delivered effectively. Teacher is in a circuit with one other school.
Art	Program is being delivered effectively by classroom teachers.
Music	Program is being delivered effectively. Teacher is in a circuit with one other school.
French Core	Program is being delivered effectively. Teacher is in a circuit with one other school.
Computer Lab	No computer lab.
Learning Centre	Provided in a classroom-sized place.
Resource Room	Provided in a classroom-sized place.
Specialty Space	Core French, Music, Learning Centre.
Library	Provided in a well equipped space.
Science Lab	N/A
Family Studies	N/A
Technology Education	N/A
Extra Curricular	Clubs focused on athletics and the arts and include photography and cribbage.
Playground	The area immediately surrounding the school is asphalt. There is fixed playground equipment onsite and the playground includes a baseball field with a backstop.
Field	Baseball field.
Food services	Lunch Room provided in an unused classroom.

### 3.2 EDUCATIONAL BENEFITS

In general, the ability for a school to staff for specialty programs and extra-curricular activities is enhanced with larger student populations. This can occur because more teaching staff can be allocated to the school in either full time positions or they are in the school for longer periods of time as part of a circuit. While each individual student's exposure to certain subjects is defined by the curriculum offered and is consistent throughout the board, the fact that art, music, gym and French teachers are able to spend more time at a school with larger pupil numbers allows for the teachers to become more familiar with their students, enhances the ability for extra-curricular offerings and enhances the ability for students with special interests in those subjects to be exposed to the subject(s) in more depth.

**Possible Outcome: Gertrude M. Parker Elementary remains open.**

Gertrude Parker is currently delivering the required educational support services and public school program. The school has room to effectively provide appropriate spaces for a library, specialty areas such as French and music, and dedicated lunch supervision space.

**Possible Outcome: Gertrude M. Parker Elementary is closed and the students are moved to Cavalier Drive School.**

Cavalier Drive School is currently delivering the public school program effectively and would continue to do so with the addition of all of the students in the projected 2012-2013 enrolment for Gertrude Parker. However, this would require the Junior High component at Cavalier Drive School to move to another school.

### 3.3 TRANSPORTATION

**Possible Outcome: Gertrude M. Parker Elementary remains open.**

Students within the boundary of Gertrude Parker Elementary School are within walking distance of the school. No students are bussed to Gertrude Parker Elementary.

**Possible Outcome: Gertrude M. Parker Elementary is closed and the students are move to Cavalier Drive.**

Some mandatory bussing would be required to Cavalier Drive School based on the current HRSB 2.4km walking distance. Costs for transportation will be incurred by the Board as a result.

### 3.4 EXTRA-CURRICULAR ACTIVITIES

It should be noted that the delivery of extra-curricular activities at any school is dependent on the staff at the school in any given year. The special interests and skills of the teaching staff along with their availability to provide extra-curricular activities generally define what is offered. Extra-curricular activities are often offered over lunch periods or after school.

**Possible Outcome: Gertrude M. Parker is closed and students are moved to Cavalier Drive School.**

Former Gertrude M. Parker students and Cavalier students will be able to continue access the extra-curricular activities offered at Cavalier Drive School, with the potential for enhancement due to the addition of new teachers at that site.

### 3.5 OPERATIONAL AND CAPITAL REQUIREMENTS

#### 3.5.1 Completed Capital Projects at Gertrude Parker Elementary School

- Roof replacement - \$83,900.00
- Positive Latching - \$5,176.46

#### 3.5.2 Immediate Operating Needs (5 years)

If Gertrude Parker Elementary were to remain open, the following deferred Maintenance and capital upgrades would need to occur over the next 5 years.

- Replace gym roof - \$80,000.00
- Replace entrance doors - \$8,000.00
- Install mag Holder on fire doors - \$8,000.00
- Repoint brick - \$29,900
- New boiler plant - \$175,000.00
- Total - \$293,276.46

#### 3.5.3 Capital Investments on Current Building

A complete Building Audit and Expenditure Plan has been completed for Gertrude Parker Elementary School and will be provided to the School Review Committee. The intent of the document is to provide a review of the existing building and to provide a capital building estimate that would be required for the continued operation of the school. The report concludes that an investment in capital of approximately \$825,365.00 is required to ensure the future use of the building.

### 3.6 PROPERTY SERVICE EFFICIENCIES

The projected cost savings to the Board for each possible outcome of the review are listed below. Please note that administrative cost savings are not included in the calculations below.

**Possible Outcome:** Gertrude M. Parker Elementary remains open

	Immediate Capital Costs 5 yr	Long Term Capital Costs 20 yr	Annual Operating Costs	Students	Annual Operating Costs/Student
Gertrude Parker	\$293,276.46	\$621,165.00	\$137,894.77	261	\$528.33
Cavalier Drive	\$15,000	\$2,115,856.00	\$233,027.60	384	\$606.84
<b>Total Costs</b>	<b>\$293,276.46</b>	<b>\$2,737,021.00</b>	<b>\$370,922.37</b>	<b>645</b>	<b>\$575.07</b>
Overall Cost Savings	0	0	0		0

**Possible Outcome:** Gertrude M. Parker Elementary is closed and the students attend Cavalier Drive School

	Immediate Capital Costs 5 yr	Long Term Capital Costs 20 yr	Annual Operating Costs	Students	Annual Operating Costs/Student
Gertrude Parker	0	0	0	0	0
Cavalier Drive	\$15,000	\$2,115,856.00	\$233,027.60	TBD	TBD
<b>Total Costs</b>	<b>\$308,276.46</b>	<b>\$2,737,021.00</b>	<b>\$233,027.60</b>	<b>TBD</b>	<b>TBD</b>
Overall Cost Savings	\$293,276.46 over 5 years	\$621,165.00 over 20 years	137,894.77/year		

### **3.7 IMPACT ON THE COMMUNITY**

If Gertrude Parker Elementary School were to close, the impact on the community surrounding the school would be largely related to the school's proximity and convenience to families that reside in the area.

### **3.8 COMMUNITY USE OF THE SCHOOL**

From September 2010 to June 2011 the following activities occurred at Gertrude Parker Elementary School. Source of this information is the HRSB/HRM Facility Booking database.

Rooms: Library, and Classroom,  
Booked by: EXCEL  
Dates: September 2010 to June 2011  
Times: 7:15 a.m. to 8:20 a.m. (Library)  
2:30 p.m. to 6:00 p.m.(Classroom)

Rooms: Gymnasium  
Booked by: School Usage  
Dates: September 2010 to June2011  
Times: 3:00 p.m. to 6:00 p.m.

Rooms: Gymnasium  
Booked By: HRSB Carter District Girl Guides  
Dates: January 11, 12, 18, 19, 25, 26  
February 1, 2, 8, 9  
March 1, 2, 8, 9, 15, 16, 22, 23, 29, 30  
April 5, 6, 12, 13, 26, 27  
May 3, 4, 10, 11, 18, 24, 25, 31  
June 1  
Times: 6:00 p.m. to 7:30 p.m.  
6:30 p.m. to 7:30 p.m.

Rooms: Gymnasium  
Booked By: HRSB Indoor Practice Season – Scott Martin  
Dates: January 6, 7, 13, 14, 17, 20, 21, 24, 28, 31  
February 3, 4, 7, 11  
Times: 6:00 p.m. -7:30 p.m.

The school was utilized by the community during the 2010-2011 school year; however, it is anticipated that the community use functions that occur at Gertrude Parker Elementary School could occur at neighbouring facilities

### **3.9 IMPACT OF POTENTIAL CONSOLIDATION (IF APPLICABLE)**

N/A

## 4.0 PROPOSED RECEIVING SCHOOL INFORMATION

### 4.1 SCHOOL NAME

Cavalier Drive School

### 4.2 SCHOOL LOCATION

116 Cavalier Drive  
Lower Sackville, NS B4C 3L9

### 4.3 ADMINISTRATION

Principal: Don Reardon  
Vice Principal: Mary Lou Fraser

### 4.4 ENROLMENT

#### 4.4.1 Cavalier Drive School Historical and Projected Enrolments

Actual enrolments are given through 2010 and projected enrolments are provided through 2015. Projections provided by Baragar Demographics.

#### Historical and Projected Enrolments for Cavalier Drive School

	2006	2007	2008	2009	2010	2011	2012	2013	2014	2015
Primary	32	34	37	34	33	27	30	32	30	30
One	29	35	32	39	33	34	28	30	32	30
Two	42	31	32	38	36	31	32	26	28	30
Three	36	41	32	32	39	38	33	34	27	30
Four	41	38	41	36	31	39	38	33	33	26
Five	38	44	40	43	34	32	40	38	33	33
Six	49	41	48	40	44	36	33	41	40	35
Seven	42	49	42	47	42	46	37	35	43	41
Eight	55	39	51	44	47	40	43	36	32	40
Nine	52	58	45	60	45	49	42	44	37	34
Total	416	410	401	413	384	372	356	349	335	329

Source: Halifax Regional School Board and Baragar Demographics

#### 4.4.2 Cavalier Drive School In and Out of Boundary Details

##### Students attending Cavalier Drive School – September 2010

- 345 students living within the Cavalier Drive School Boundary
- 39 students living in other school boundaries
- Total of 384 students attending Cavalier Drive School as of September 30, 2010

##### Students living in Cavalier Drive School Boundary – September 2010

- 345 students from the Cavalier Drive School Boundary attend the school as of September 30, 2010;
- 16 students from the Cavalier Drive School Boundary attend other schools as of September 30, 2010

#### 4.4.3 Cavalier Drive School Registered Enrolment for September 2011

The following registered enrolments for September 2011 are accurate as of April 30, 2011. The actual September 30, 2011 enrolments will be provided to the School Review Committee in October 2011.

Grade	April 30, 2011 Registered Enrolment for September 2011
Primary	25
One	35
Two	34
Three	37
Four	38
Five	31
Six	34
Seven	44
Eight	44
Nine	47
Total	369

#### 4.4.4 Impact of the Review Outcome on Cavalier Drive School

If Gertrude Parker School were to close effective September 2012, the entire student population would be assigned to Cavalier Drive School. Cavalier Drive is currently delivering the required educational support services and public school program.

##### **Possible Outcome: Cavalier Drive accepts the students from Gertrude Parker and keeps its Junior High Component.**

If Gertrude Parker closes and the students are enrolled at Cavalier Drive School, and if Cavalier Drive School maintains its Junior High component, Cavalier would require 25 classroom spaces. The school has 5 classrooms being used for various purposes that could be converted back to regular classrooms (i.e. Resource), and 6 of the 11 identified specialty areas would also need to be converted back to regular classrooms in order to reach the 25 classrooms required under this scenario

These specialty areas might include one of the two Learning Centers, the Band or Music room, the Art Room, the Computer Lab and the Science Lab.

While the programming could be delivered in the existing educational spaces under this scenario, scheduling challenges, with respect to specialist teachers, would be evident.

##### **Possible Outcome: Cavalier Drive accepts the students from Gertrude Parker and the Junior High component is moved to Leslie Thomas School.**

In this scenario, with a requirement for 20 classroom spaces, one specialty area space would require conversion back to a regular classroom due to the requirement for 20 classrooms. The specialty space that would need to be converted could include the Band Room or the Art Room.

#### 4.5 SCHOOL CONFIGURATION

Primary to Grade 9  
Regular English Program

#### 4.6 PHYSICAL CONDITION OF THE BUILDING

##### 4.6.1 Facility Utilization

Capacity: 501  
Enrolment September 30, 2010: 384  
Utilization September 30, 2010: 77%

##### 4.6.2 Condition of Building Structure and Systems

###### Completed Capital Projects at Cavalier Drive School

- Front entry door replacement - \$15,000.00

###### Deferred Maintenance and Required Capital Upgrades over the next 5 years

- Grounds drainage – \$15,000.00

###### Required Capital Upgrades

A complete Building Audit and Expenditure Plan has been completed for Cavalier Drive School and will be provided to the School Review Committee. The intent of the document is to provide a review of the existing building and to provide a capital building estimate that would be required for the continued operation of the school. The report concludes that an investment in capital of approximately \$2,115,856.00 is required to ensure the future use of the building.

##### 4.6.3 Costs Associated With Maintenance and Operation

Costs	2009/2010	2010/2011
Utilities		
Phone	\$7,572.00	\$7,572.00
Power	\$25,641.97	\$21,457.21
Fuel	\$47,100.49	\$57,181.73
Water	\$3,538.61	\$4,549.31
Maintenance	\$17,113.45	\$18,213.45
Caretaker and Supplies	\$120,367.57	\$124,053.90
<b>Total</b>	<b>\$221,334.09</b>	<b>\$233,027.60</b>

##### 4.6.4 Operation and Availability of Accessibility Ramps, Elevators, Accessible Playgrounds

Please refer to the Building Audit and Expenditure Plan

#### 4.7 BUILDING USE

##### 4.7.1 Excess Space

Number of students as of September 30, 2010 = 374  
Square footage = 49,117 square feet

#### 4.7.2 Teaching Spaces and Current Usage

Room	Size (sq. ft.)	Intended Use	Current Use
<b>Ground Floor</b>			
Classroom 100		Classroom	Classroom*
Classroom 101		Classroom	Core French**
Classroom 102		Classroom	Classroom*
Classroom 109		Classroom	ELT Training Room*
Classroom 110		Classroom	Junior High Support/Grade 9 ELA*
Classroom 111		Classroom	Band Room**
Classroom 130		Classroom	Classroom*
Classroom 128		Science Lab	Science Lab**
Classroom 127		Art Room	Visual Arts/Science/Math**
Classroom 119		Classroom	Learning Centre**
Classroom 118		Classroom	Learning Centre**
Classroom 113		Classroom	Resource*
Classroom 143		Classroom	Computer lab**
Classroom 152		Family Studies lab	Family Studies Lab**
Classroom 159		Tech. Ed. Lab	Tech. Ed. Lab**
Gym/Assembly Hall		Gym/Assembly Hall	Gym/Assembly Hall**
Library		Library	Library**
<b>First Floor</b>			
Classroom 200		Classroom	Music Room**
Classroom 201		Classroom	Classroom*
Classroom 202		Classroom	Classroom*
Classroom 203		Classroom	Classroom*
Classroom 208		Classroom	Classroom*
Classroom 209		Classroom	Classroom*
Classroom 210		Classroom	Resource*
Classroom 225		Classroom	Classroom*
Classroom 224		Classroom	Classroom*
Classroom 222		Classroom	Classroom*
Classroom 221		Classroom	Classroom*
Classroom 116		Classroom	Classroom*
Classroom 113		Classroom	Classroom*
Classroom 112		Classroom	EXCEL Room*

\* denotes a room that was considered as classroom space.

\*\* denotes a room that was considered as a specialty area (i.e. Music).

### **4.7.3 Impact of Increased Number of Students on Building Usage**

The effect on space allocation at Cavalier Drive School depends on the decision whether to keep the Junior High component in place at Cavalier Drive School or to move those students to Leslie Thomas. If Cavalier Drive School were to receive students from Gertrude Parker and maintained its Junior High component, 25 classrooms would be required.

Moving the Elementary students only from Gertrude Parker would require 20 classrooms, up from the 14 currently being used. This could be achieved through the conversion of one specialty area space back to a regular classroom.

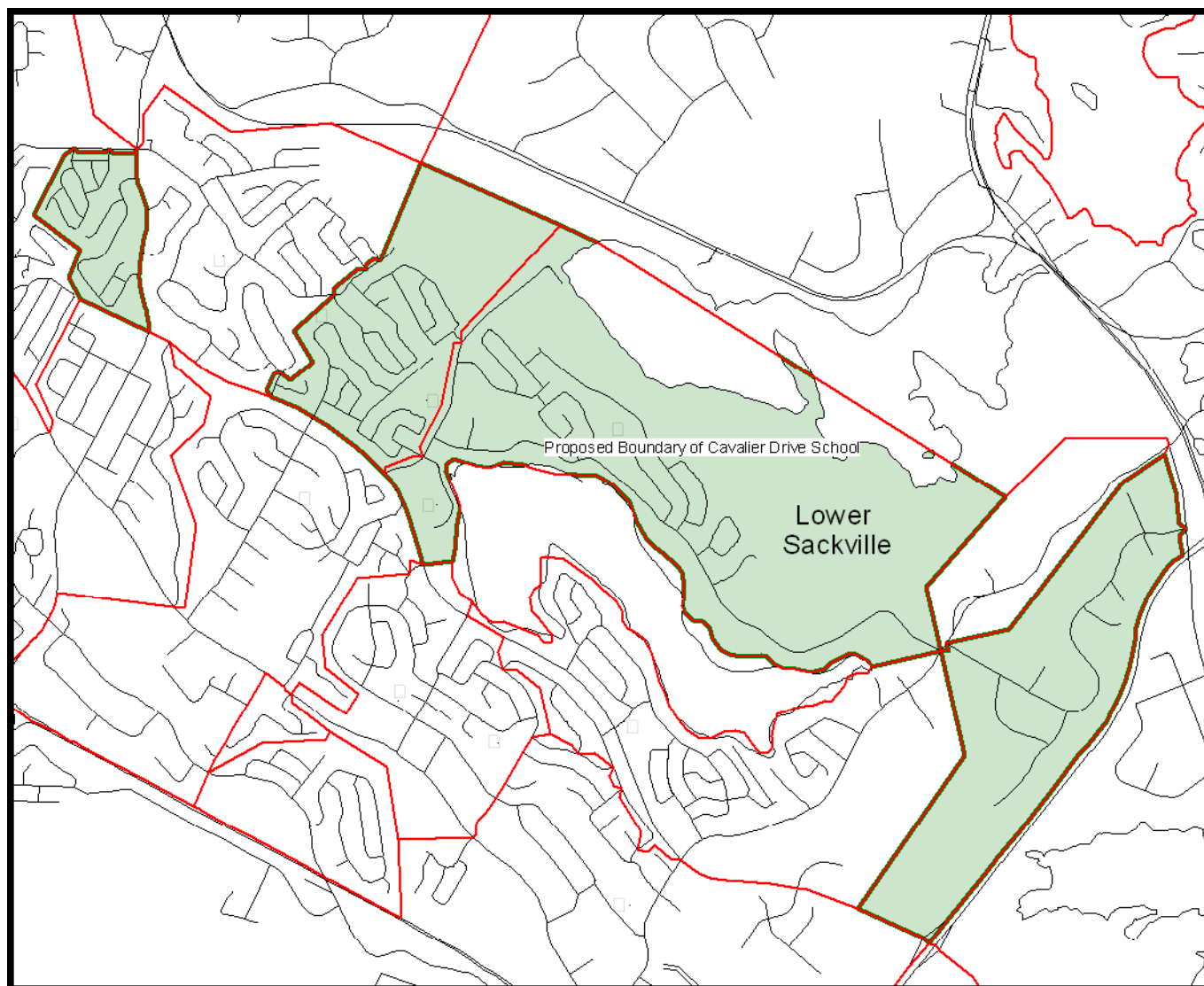
### **4.8 TRANSPORTATION**

Currently, there are students who qualify for bussing based on distance attending Cavalier Drive.

#### 4.9 PROPOSED ATTENDANCE BOUNDARY

If Gertrude Parker Elementary School were to close with students being redirected to Cavalier Drive School the new boundary would be as shown below.

Proposed Boundary of Gertrude Parker and Cavalier Drive School



Source: Halifax Regional School Board and Baragar Demographics