



## SCHOOL REVIEW PROCESS

### Impact Assessment Report Prince Arthur Junior High School

For more information, please contact: Jill McGillicuddy, 464-2000 ext.2277

## TABLE OF CONTENTS

<b>1.0 Introduction</b>	4
<b>2.0 School Information</b>	
2.1 School Name	5
2.2 School Configuration	5
2.3 School Location	5
2.4 Administration	5
2.5 Population Patterns	5
2.5.1 Projection Methodology	5
2.5.2 Halifax Regional Municipality Historical and Projected Population	6
2.5.3 Eastern Central HRM Planning Area Historical and Projected Population	7
2.6 Enrolment	9
2.6.1 Historical and Projected Enrolment for HRSB 1998/1999 to 2017/2018	9
2.6.2 Dartmouth High Family of Schools Historical and Projected Enrolment by Grade	10
2.6.3 Prince Arthur Junior High School Historical and Projected Enrolments	10
2.6.4 Prince Arthur Junior High School In and Out of Boundary Details	10
2.6.5 Prince Arthur Junior High School Registered Enrolment for September 2011	11
2.7 Capital Construction Planning	
2.7.1 Halifax Regional Municipality Regional Plan	11
2.7.2 HRM Facility Master Plan	11
2.7.3 Community Visioning	12
2.7.4 Proposed Development	12
2.8 Physical Condition of Building	
2.8.1 Condition of Building Envelope, Interior and Systems	12
2.8.2 Indoor Air Quality and Environmental Issues	12
2.8.3 Costs Associated with Maintenance, Repair and Operation	12
2.8.4 Barrier Free Accessibility to Building and Grounds	12
2.9 Building Use	
2.9.1 Floor plan	13
2.9.2 Building Details	16
2.9.3 Teaching Spaces and Current Usage	16
2.9.4 Excess Teaching Spaces	17
2.9.5 Prince Arthur Junior High School Boundary	17
<b>3.0 Impact Analysis</b>	
3.1 Capability to Deliver Public School Program	19
3.1.1 Facility Program Delivery Review	19
3.1.2 Public School Programming	20
3.2 Educational Benefits	20
3.3 Transportation	21
3.4 Extra-Curricular Activities	21
3.5 Operational and Capital Requirements	
3.5.1 Completed Capital Projects at Prince Arthur Junior High School	21
3.5.2 Immediate Operating Needs (5 years)	21
3.5.3 Capital Investments on Current Building for 20 Year Building Life	22
3.5.4 Capital Needs to Upgrade to Current Standards for New Elementary Schools	22
3.6 Property Service Efficiencies	22
3.7 Impact on the Community	22

3.8 Community Use of the School	23
3.9 Impact of Potential Consolidation (if applicable)	24
<b>4.0 Proposed Receiving School Information</b>	
4.1 School Name	25
4.2 School Location	25
4.3 Administration	25
4.4 Enrolment	
4.4.1 Bicentennial School Historical and Projected Enrolments	25
4.4.2 Bicentennial School In and Out of Boundary Details	25
4.4.3 Bicentennial School Registered Enrolment for September 2011	26
4.4.4 Impact of the Review Outcome on Bicentennial School	
4.5 School Configuration	26
4.6 Physical Condition of the Building	
4.6.1 Facility Utilization	26
4.6.2 Condition of Building Structure and Systems	26
4.6.3 Costs Associated With Maintenance and Operation	27
4.6.4 Operation and Availability of Accessibility Ramps, Elevators, Accessible Playgrounds	27
4.7 Building Use	
4.7.1 Excess Space	
4.7.2 Teaching Spaces and Current Usage	27
4.7.3 Impact of Increased Number of Students on Building Usage	28
4.8 Transportation	29
4.9 Proposed Attendance Boundary	29

#### **Supplementary Information**

Building Audit and Expenditure Report

Halifax Regional School Board Facilities Master Plan (pending approval - tabled March 2011)

Halifax Regional Municipality Regional Plan

Halifax Regional Municipality Facilities Master Plan

## 1.0 INTRODUCTION

Recently, the Halifax Regional School Board has undertaken a 10 year facility master planning process which resulted in a staff report and recommendations which were presented to the elected Board in February 2010 (<http://www.hrsb.ns.ca/files/Downloads/pdf/reports/2009-2010/February/10-01-1236.pdf>). The elected board requested the facility master plan be prepared and presented in smaller components.

**It was moved and seconded (Conrod/Finlayson) that the Board request staff to develop an approach or process that would divide the capital construction master plan into more manageable components---for example, area-by-area or family-by-family, and that staff review this approach or process, including a timeline, with the Board before it begins.  
(CARRIED)**

During the 2010-2011 school year, staff prepared a facility master plan that is divided by family of schools. The plan outlines the historical information, demographics, feeder system – existing and proposed, and requested capital project for each area. The staff report and proposed facility master plan was tabled at the Board meeting of March 30, 2011.

The Capital Plan has identified a number of schools that should be considered for review as part of the ongoing planning process. Catchment areas that are experiencing enrolment decline provide opportunities to consolidate populations into existing infrastructure, renovated or replacement schools.

In April 2009, the Province of Nova Scotia announced funding for a number of new schools as well as capital upgrades to existing infrastructure. A replacement school for Prince Arthur and Southdale/North Woodside was announced providing programming for Primary to Grade 9. As part of the Capital Plan, staff have recommended a request be submitted to Department of Education requesting a revision to this capital project.

The revision would request a replacement school for Southdale/North Woodside Elementary and South Woodside delivering programming for grades primary through six. Prince Arthur Junior High School is being reviewed for possible permanent closure with students being redirected to Bicentennial School. In the longer term, English Program students would continue to be directed to Bicentennial School and French Immersion students being directed to Shannon Park. The Facilities Master Plan recommends a capital upgrade and grade reconfiguration from P-6 to P-9 at Shannon Park School.

The information in this report has been compiled in accordance with Provincial school review regulations and outlines information for the School Review Committee to consider regarding possible impacts of the South Woodside Elementary School review.

## 2.0 SCHOOL INFORMATION

### 2.1 SCHOOL NAME

Prince Arthur Junior High School

### 2.2 SCHOOL CONFIGURATION

Grade 7 to Grade 9

Regular Program

Early French Immersion

### 2.3 SCHOOL LOCATION

85 Prince Arthur Ave

Dartmouth, NS B2Y 0B3

### 2.4 ADMINISTRATION

Principal: Darcel Williams Hart

Vice Principal: Sarah Miles

### 2.5 POPULATION PATTERNS

#### 2.5.1 Projection Methodology

##### **Paradigm Shift Inc.**

Currently, the Board has the advantage of reviewing projections as prepared by two demographic systems. The Imagine our Schools consultants submitted projected demographics as prepared by Paradigm Shift Inc. The methodology that was applied included the cohort-survival method combined with the residual method.

The cohort survival method applies historical census data and projects future population based on assumptions about births, deaths, and migration. The residual method is derived from a calculation of population between two points in time for which population data is available using the Cohort Survival Method. Additionally, the consultants worked closely with the Halifax Regional Municipality in determining approved/potential development areas.

##### **Baragar Demographics**

The Halifax Regional School Board has purchased planning software from Baragar Demographics and as part of the licensing agreement, the company provides the Board with projections for each school on a yearly basis.

Baragar Demographics applies a similar methodology as Paradigm Shift Inc. Their data analysis includes:

- Analysis of yearly birth records;
- Determining the number of children who reside in a boundary by accessing the Universal Child Care Benefit tax records and Canada Child Tax Benefit records on a yearly basis;
- Applying census information such as women of child bearing years, generally in the age cohorts of 25-29, 30-34, and 35-39; and
- Applying a historical migration rate (+/-) of the boundary.

Upon comparison, the projections as prepared by each company are relatively close. Paradigm Shift has not been asked for updated projections since 2009, resulting in stale-dated data in later years. Baragar Demographics provides yearly projections and as such is the projection software package that will be utilized on a go forward basis.

## 2.5.2 Halifax Regional Municipality Historical and Projected Population

### Historical

- The total population of Halifax Regional Municipality (HRM) increased by 8.8% from 1996 to 2006; however, during this same period the age 5 to 19 population decreased by 0.9%.
- The age 0 to 4 population has decreased significantly from 6.6% of the total population in 1996 to 4.9% of the total population in 2006.

### Projected

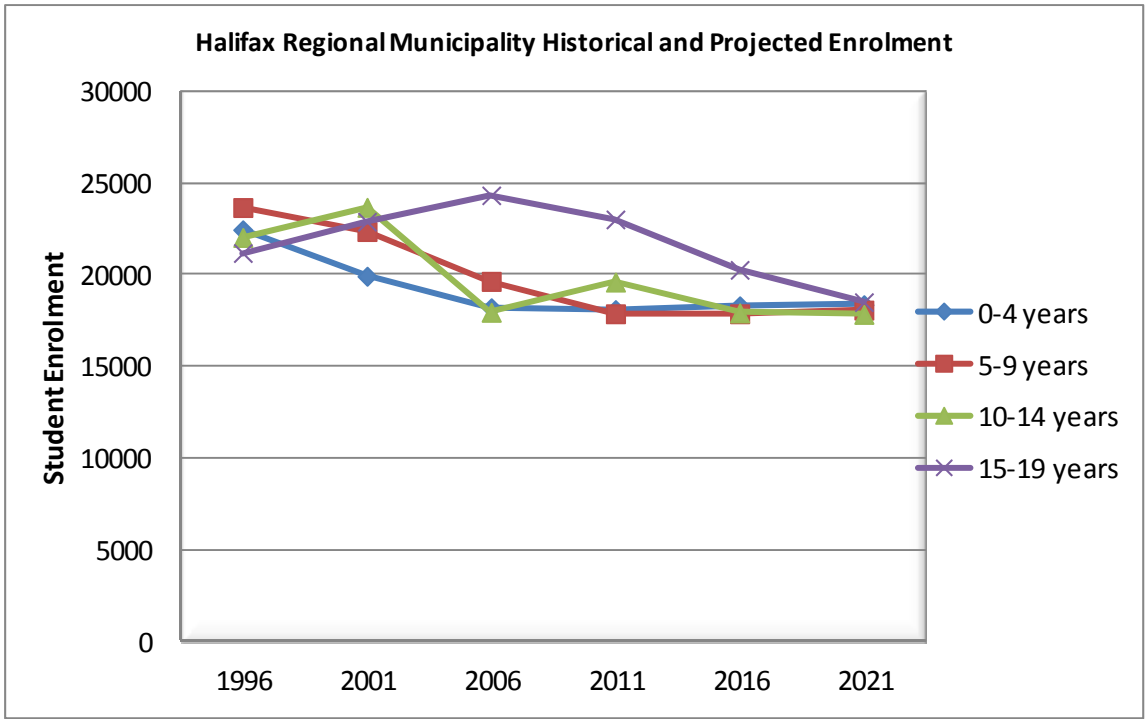
- The age 5 to 19 population comprised 17.8% of the total population in 2006, this value is estimated to steadily decline to 13.4% in 2021.
- The age 5 to 19 population will decrease due to the lower age 0 to 4 population that will move into the older age cohorts.
- The age 0 to 4 population is expected to remain stable due to a projected value of approximately 3800 live births per year.

### Halifax Regional Municipality Historical and Projected Population

Age Cohort	1996	2001	2006	2011	2016	2021
0 to 4	22,460	19,925	18,205	18,104	18,311	18,368
5 to 9	23,675	22,365	19,645	17,957	17,873	18,080
10 to 14	22,040	23,685	22,325	19,608	17,924	17,842
15 to 19	21,190	22,905	24,340	23,025	20,274	18,510
20 to 24	25,570	26,560	28,120	29,842	28,868	25,938
25 to 29	27,950	26,440	26,015	27,578	29,262	28,261
30 to 34	33,195	27,600	25,850	25,461	27,025	28,676
35 to 39	31,980	32,850	27,405	25,677	25,294	26,852
40 to 44	28,080	31,645	32,745	27,336	25,601	25,214
45 to 49	25,765	28,070	31,565	32,675	27,327	25,569
50 to 54	19,075	25,525	28,235	31,741	32,913	27,674
55 to 59	14,155	18,335	25,065	27,778	31,229	32,402
60 to 64	12,305	13,670	18,235	24,898	27,819	31,262
65 to 69	10,595	11,840	13,210	17,525	23,918	26,896
70 to 74	9,415	9,715	11,010	12,327	16,254	22,172
75 to 79	7,055	8,060	8,560	9,677	10,854	14,197
80 to 84	4,610	5,535	6,475	6,924	7,771	8,719
85 to 89	2,325	2,880	3,735	4,420	4,758	5,301
90 and over	1,230	1,505	1,935	2,476	3,014	3,400
<b>Total Population</b>	<b>342,670</b>	<b>359,110</b>	<b>372,675</b>	<b>385,029</b>	<b>396,289</b>	<b>405,333</b>

Sources: Statistics Canada (historical), Environmental Design and Management Ltd.

Figures do not include Census under-count.



### 2.5.3 Eastern HRM Planning Area Historical and Projected Population

#### Historical Population

- The total population of the Eastern Central HRM planning area increased by 5% from 1996 to 2006.
- During this same period the age 5 to 19 population increased by 27%.
- The age 0 to 4 population decreased by 25.5% in the same time frame.

#### Projected Population

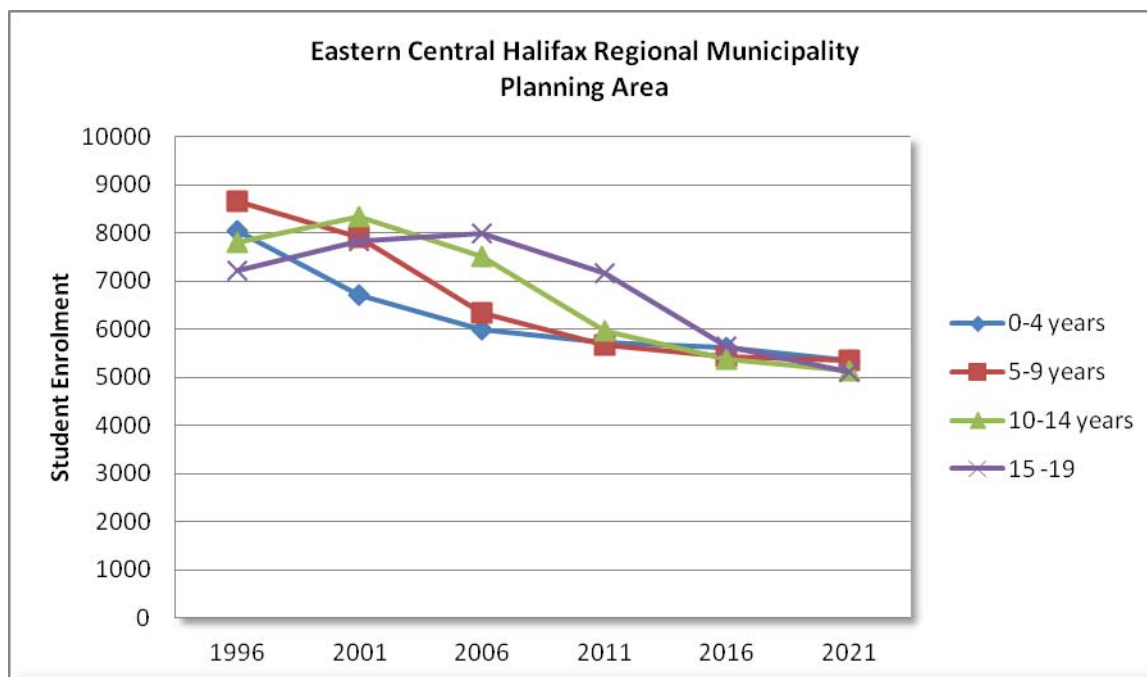
- The age 5 to 19 population comprised 21.5% of the total population in 1996 and remained relatively steady at 18.9% of the total population in 2006. This value is estimated to steadily decline to 13.9% in 2021.

**Eastern Central Halifax Regional Municipality Planning Area (Dartmouth High, Prince Andrew High, Cole Harbour District High, and Auburn Drive High Families of Schools)**

Historical and Projected Enrolment

Age Cohort	1996	2001	2006	2011	2016	2021
0 to 4	8,050	6,725	6,005	5,726	5,633	5,354
5 to 9	8,675	7,925	6,345	5,681	5,430	5,356
10 to 14	7,805	8,355	7,525	5,977	5,370	5,149
15 to 19	7,210	7,830	8,000	7,174	5,658	5,106
20 to 24	7,395	7,070	7,225	7,353	6,551	5,052
25 to 29	8,040	7,310	6,920	7,107	7,221	6,403
30 to 34	10,840	8,395	7,645	7,213	7,468	7,596
35 to 39	11,020	10,950	8,440	7,669	7,235	7,533
40 to 44	9,270	10,925	10,620	8,101	7,380	6,971
45 to 49	8,200	9,325	10,625	10,275	7,771	7,104
50 to 54	5,950	8,210	9,180	10,460	10,096	7,617
55 to 59	4,390	5,655	7,810	8,683	9,896	9,472
60 to 64	3,925	4,300	5,585	7,687	8,603	9,791
65 to 69	3,200	3,860	4,085	5,285	7,263	8,156
70 to 74	2,610	3,010	3,465	3,680	4,742	6,514
75 to 79	1,595	2,370	2,685	3,088	3,309	4,206
80 to 84	975	1,330	1,820	2,054	2,333	2,500
85 to 89	455	625	800	1,084	1,187	1,320
90 and over	260	360	470	600	792	932
<b>Total Population</b>	<b>109,865</b>	<b>114,530</b>	<b>115,250</b>	<b>114,897</b>	<b>113,938</b>	<b>112,132</b>

Sources: Statistics Canada (historical), Environmental Design and Management Ltd (projected).  
 Figures do not include Census under-count.



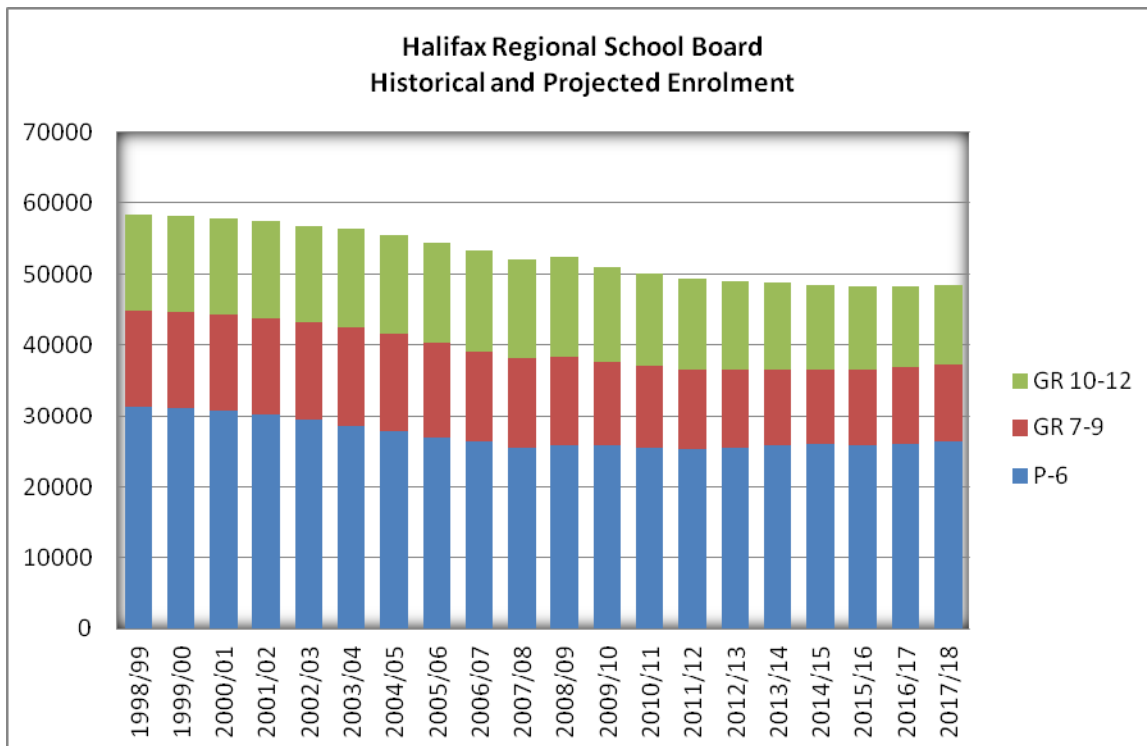
## 2.6 ENROLMENT

Enrolment projections are based upon the Cohort-Survival Method, which uses historical grade by grade enrolment to estimate a grade by grade projection for each program offered at a school. This method uses trends to identify the progression of students from one grade to the next higher grade. Other data sources, including historical migration rates (+/-) of the catchment area, analysis of out-of-area students, feeder school analysis, and an analysis of the Universal Child Benefit tax record and Canada Child Tax Benefit Tax records on a yearly basis are used to supplement the Cohort-Survival Method projections.

### 2.6.1 Historical and Projected Enrolment for HRSB 1998/1999 to 2017/2018

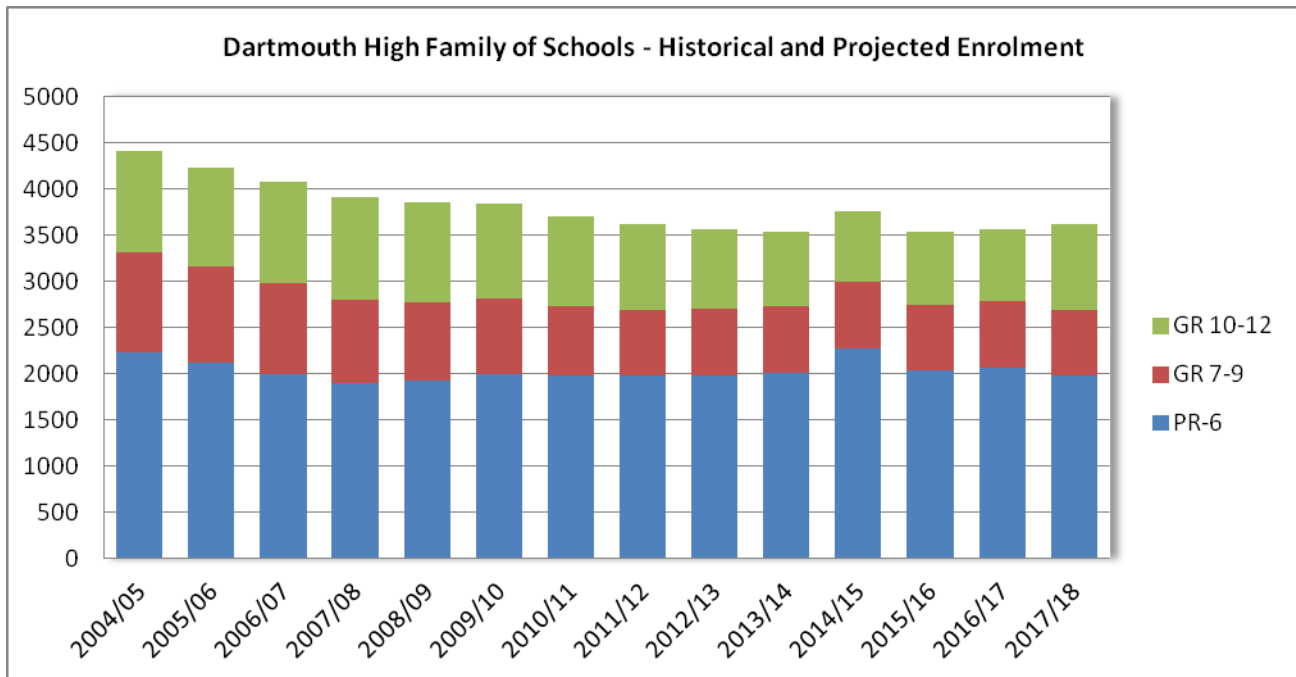
Over the past ten years the total student enrolment in the Halifax Regional School Board has shown a steady decline. As of 2010/2011 enrolment has decreased by 8,128 students from the total enrolment of 58,297 in 1998/1999.

Over the next five to seven years enrolments are estimated to continue to marginally decline with the most significant decline having occurred. The construction of new housing and a positive migration rate have helped mitigate some of the decline that has occurred during the past ten years. The projections indicate a decrease of approximately 1700 students from the registered enrolment of September 2010 to the projected enrolment of 2017.



### 2.6.2 Dartmouth High Family of Schools Enrolment by Grade

The following charts outline the historical enrolment and the projected enrolment in the Dartmouth High Family of Schools. According to this data the total enrolments will remain relatively constant with a slight decrease over the next 5 years.



### 2.6.3 Prince Arthur Junior High School Historical and Projected Enrolments

Prince Arthur Junior High School provides regular programming and Early French Immersion for grades Seven to Nine. Actual enrolments are given through 2010 and projected enrolments are provided through 2015. Projections provided by Baragar Demographics.

#### Historical and Projected Enrolments of South Woodside Elementary School

	2005	2006	2007	2008	2009	2010	2011	2012	2013	2014	2015
Seven	173	156	144	162	115	120	126	137	129	120	149
Eight	160	165	153	133	157	111	116	122	132	125	117
Nine	175	150	161	146	135	150	107	111	115	124	119
Total	508	471	458	441	407	381	348	370	376	371	386

Source: Halifax Regional School Board and Baragar Demographics

### 2.6.4 Prince Arthur Junior High School In and Out of Boundary Details

#### Students attending Prince Arthur Junior High School – September 2010

- 272 students living within the Prince Arthur Junior High School Boundary
- 19 students living in other junior high school boundaries attend English Program and 90 students attend French Immersion program
- Total of 381 students attending Prince Arthur Junior High School as of September 30, 2010

### Students living in the Prince Arthur Junior High School boundary – September 2010

- 272 students from the Prince Arthur Junior High School Boundary attend the school as of September 30, 2010
- 23 students from the Prince Arthur Junior High School Boundary attend other schools as of September 30, 2010

### 2.6.5 Prince Arthur Junior High School Registered Enrolment for September 2011

The following registered enrolments for September 2011 are accurate as of April 30, 2011. The actual September 30, 2011 enrolments will be provided to the School Review Committee in October 2011.

Grade	Enrolment as of April 30, 2011
Seven	101
Eight	119
Nine	106
Total	326

## 2.7 CAPITAL CONSTRUCTION PLANNING

### 2.7.1 Halifax Regional Municipality Regional Plan

Prince Arthur Junior High School and its catchment area are designated Urban Settlement in the HRM Regional Municipal Planning Strategy. The designation includes developed and undeveloped lands and includes six sites as potential areas for new urban growth.

Within each designation there are a series of mixed use transit oriented centres. The Prince Arthur catchment area is located in urban local centre. Permitted land uses in the urban local centre include a mix of medium to high density residential, commercial, institutional and recreation uses. In established neighbourhoods, low to medium density residential uses would be encouraged.

The HRM Regional Plan states that approximately 25% of the growth in the next 25 years will be targeted to occur in the Regional Centre, approximately 50% of the growth will occur in the suburban areas and the remaining 25% will occur within the rural areas.

During the development of the Regional Plan, HRM had a demographic study prepared by Clayton Research. They found that the projected housing demand by type from 2001-2026 for the Suburban region to be:

Single and Semis:	18,851
Row:	735
Apartments and others:	11,013
Total:	30,599

### 2.7.2 HRM Facility Master Plan

The Communities Facilities Master Plan (CFMP) was approved in principle in May 2008. The objective of the CFMP is to specifically indicate where facilities will be constructed; which existing facilities will be improved; and joint school use agreements and partnerships for community facilities throughout HRM over the next 20 years.

The Municipality has indicated the Dartmouth area is well serviced and should Prince Arthur Junior High School be closed, the site would not be considered for community use. Should this site be returned to the Municipality, the real estate division of transportation public works would initiate a formal assessment regarding future use of the building and site.

### 2.7.3 Community Visioning

HRM has been undertaking visioning exercises to further develop ideas for identified growth centres within the HRM Regional Plan. The community visioning exercise for Woodside has begun and the Review Community will be provided with information regarding this planning process.

### 2.7.4 Proposed Development

HRM Planning and Development Services have provided the following development numbers for the Prince Arthur and Bicentennial catchment areas.

- July 2009-June 2011 – Building permits issued for 176 units – 159 multiple units and 17 residential single units or semi-detached dwellings
- Occupancy permits – 80 residential units have received occupancy permits
- Anticipated development (in process, not approved) – 616 multiple units

## 2.8 PHYSICAL CONDITION OF BUILDING

### 2.8.1 Condition of Building Envelope, Interior and Systems

A complete Building Audit and Expenditure Plan has been completed for Prince Arthur Junior High School and will be provided to the School Review Committee. The intent of the document is to provide a review of the existing building and to provide a capital building estimate that would be required for the continued operation of the school. The report concludes that an investment in capital of approximately \$4,315,600.00 is required to ensure the future use of the building.

### 2.8.2 Indoor Air Quality and Environmental Issues

The Review Committee will be provided with any past investigations and reports regarding indoor air quality and environmental issues at Prince Arthur Junior High School.

### 2.8.3 Costs Associated with Maintenance, Repair and Operation

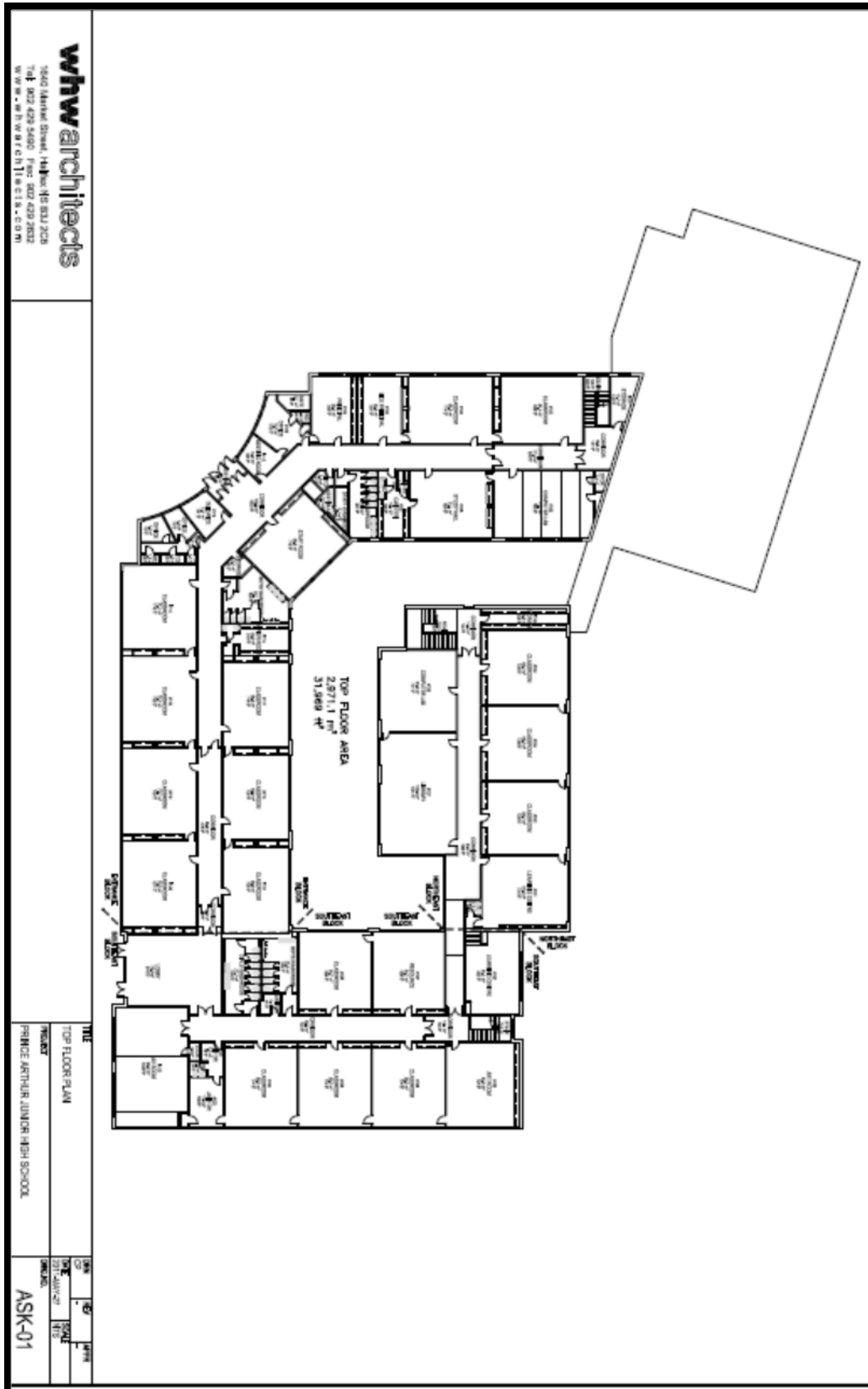
Costs	2009/2010	2010/2011
Utilities		
Phone	\$8,424.00	\$8,424.00
Power	\$31,218.57	\$23,901.20
Fuel	\$81,885.18	\$69,110.98
Water	\$28,349.43	\$17,856.44
Maintenance	\$12,131.43	\$12,431.43
Caretaker and Supplies	\$175,175.21	\$180,683.24
<b>Total</b>	<b>\$337,183.82</b>	<b>\$312,407.29</b>

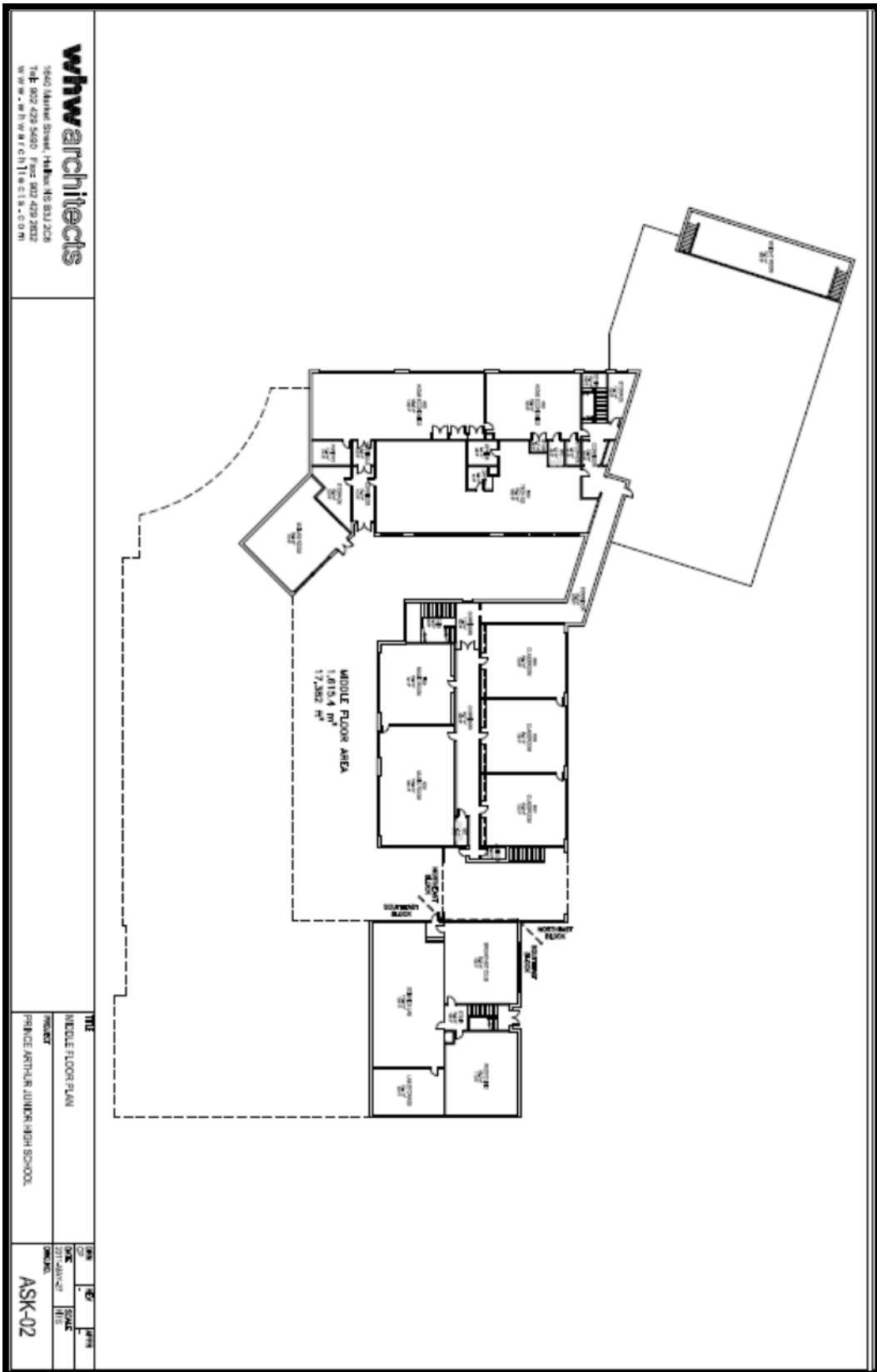
### 2.8.4 Barrier Free Accessibility to Building and Grounds

Please refer to the Building Audit and Expenditure Plan.

## 2.9 Building Use

### 2.9.1 Floor plan

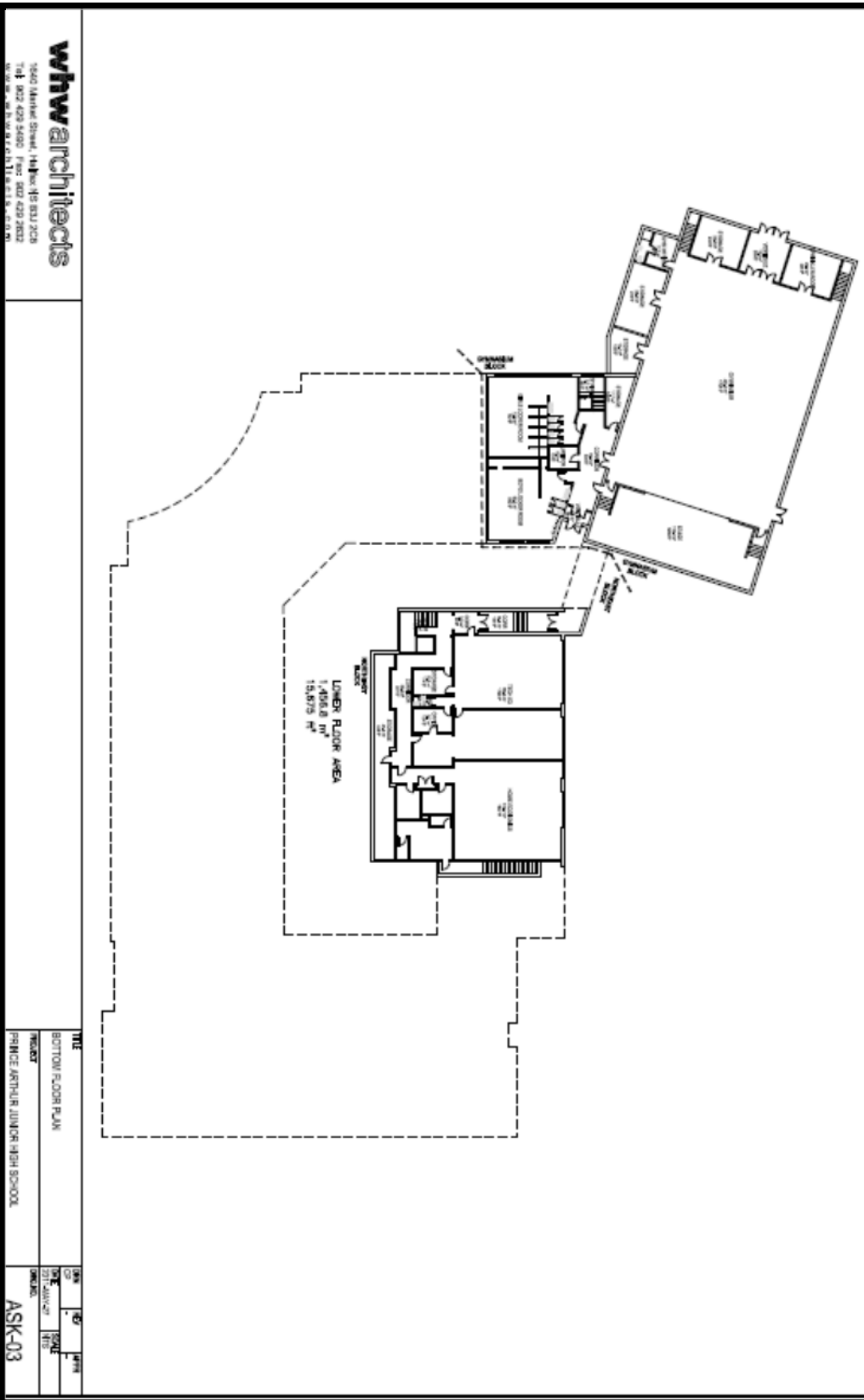




**whw architects**  
 1540 Market Street, Halifax NS B3J 2C6  
 Tel: 902 429 5400 Fax: 902 429 2032  
 www.whwarchitects.com

TITLE  
 MIDDLE FLOOR PLAN  
 PROJECT  
 PRINCE ARTHUR JUNIOR HIGH SCHOOL

DATE  
 2011-04-29  
 SCALE  
 1/8" = 1'-0"  
 SHEET  
 ASK-02



## 2.9.2 Building Details

**Gross building square footage: 64,919 square feet**

No. of storeys: 3

Building Age: 1967

Accessibility: no

Elevator (Y/N): no

## 2.9.3 Teaching Spaces and Current Usage

Room	Intended Use	Current Use
<b>Ground Floor</b>		
Classroom 1	Classroom	classroom
Classroom 2	Classroom	classroom
Classroom 3	Classroom	Part time classroom for grade 9 healthy living
Classroom 4	classroom	classroom
Classroom 5	classroom	classroom
Classroom 6	classroom	Teacher resource room
Classroom 7	Audio Visual room	Audio Visual room
Classroom 8	Classroom	classroom
Classroom 9	Classroom	classroom
Classroom 10	Classroom	classroom
Classroom 11	Classroom	classroom
Classroom 12	Classroom	Room for ANSST to meet with students
Classroom 13	Classroom	Art classroom
Classroom 14	Classroom	Resource room
Classroom 15	Classroom	Learning Center
Classroom 16	Classroom	classroom
Classroom 17	Classroom	classroom
Classroom 18	Classroom	classroom
Classroom 19	Classroom	Computer lab
Classroom 20	Classroom	Lunch room
Classroom 21	Classroom	Lunch room
Classroom 22	Classroom	Lunch room
Classroom 23	Classroom	In school support room
Classroom 24	Classroom	Computer room
Classroom 25	Library	Library
Various small rooms including administration offices, staff room, guidance office, caretakers room and storage		
<b>Middle Floor</b>		
Classroom 26	Classroom	classroom
Classroom 27	Classroom	classroom
Classroom 28	Classroom	Part time classroom for grade 7/8 Healthy Living
Classroom 29	Classroom	Music room
Classroom 30	Classroom	Band Room
Classroom 31	Science Lab	Science Lab

Classroom 32	Classroom	Recycling room
Classroom 33	Classroom	Extra room ( was used for breakfast club)
Classroom 34	Tech Ed	Tech Ed - woodshop

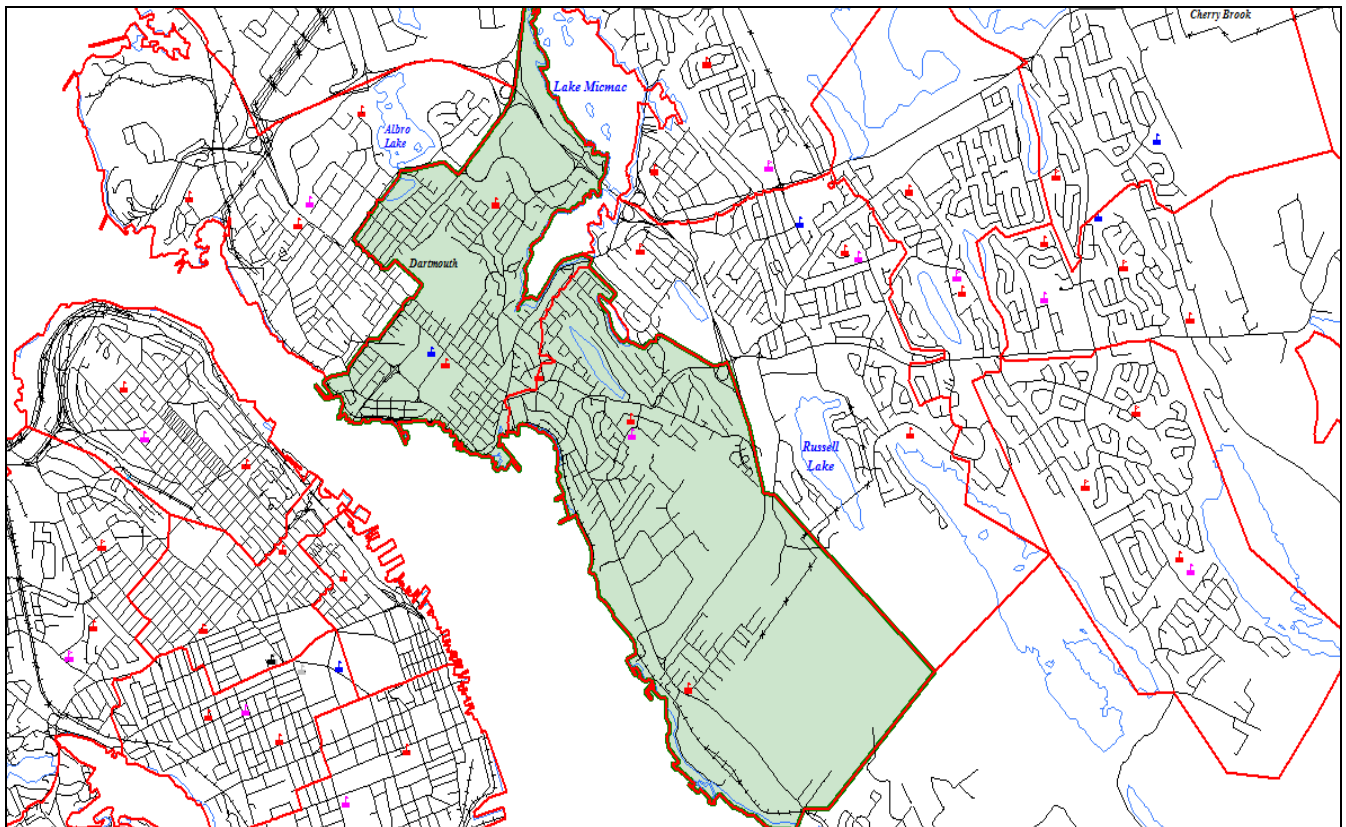
### 2.9.4 Excess Teaching Spaces

Prince Arthur has 23 classroom spaces and 14 specialty areas available.

Based on the current class configuration, Prince Arthur requires 13 of the 23 available classroom spaces leaving 10 classroom spaces available for other uses (i.e. Resource, Lunch room, etc.)

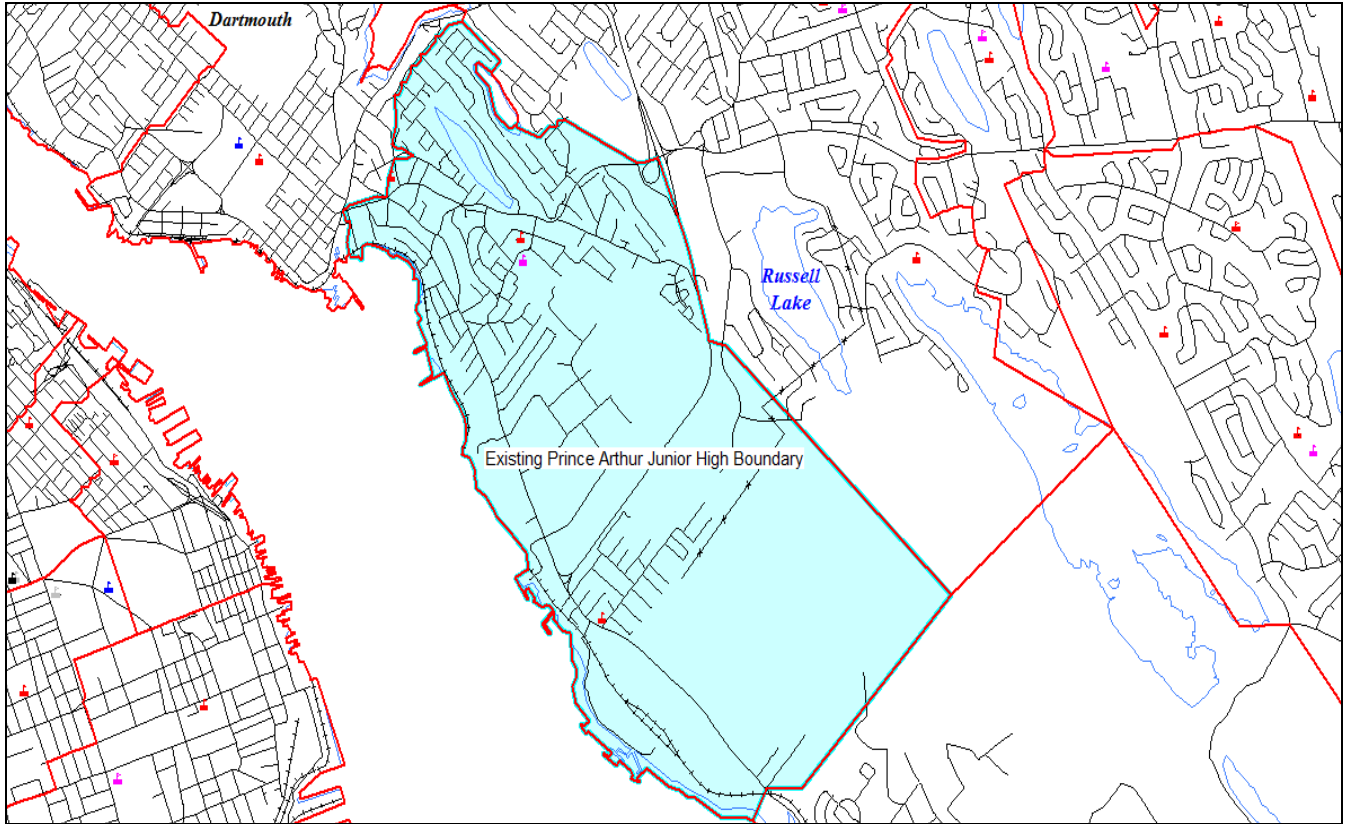
### 2.9.5 Prince Arthur Junior High School Boundary

#### CENTRAL DARTMOUTH PLANNING AREA



Source: Halifax Regional School Board and Baragar Demographics

## Prince Arthur Junior High School Boundary



Source: Halifax Regional School Board and Baragar Demographics

3.0 IMPACT ANALYSIS

3.1 CAPABILITY TO DELIVER PUBLIC SCHOOL PROGRAM

3.1.1 ABILITY AS A FACILITY TO DELIVER THE PUBLIC SCHOOL PROGRAM

Facility Program Delivery Review is a term used to define how well an educational facility serves the academic program being offered. It does not refer to the quality of the school’s academic programs or the success of its students measured by test scores. A Facility Program Delivery Review does not reflect the state of the physical plant of the building for architectural, structural, mechanical or electrical conditions.

A Facility Program Delivery Review was conducted by the consultants for all schools in the Imagine Our Schools planning process.

Facility Program Deliver Review Results for Prince Arthur Junior High School

Facility Program Delivery Review Observations					
	Poor	Fair	Average	Above Average	Excellent
<b>Site Condition</b>					
<b>Educational Areas</b>					
Classrooms					
Other Instructional Areas					
Library					
Gymnasium					
<b>Support Areas</b>					
Administration/Student Services					
Cafeteria/Food Services (none)					

### 3.1.2 Public School Programming

The following are details regarding Prince Arthur Junior High School's ability to deliver the public school program based on data from April 30, 2011. It is noted that Prince Arthur Junior High School is currently delivering the public school program as mandated by the Province.

- Pupil-Teacher Ratio = 26.8:1 (enrolment divided by classroom teachers only)
- Pupil-Staff Ratio = 14.9:1 (enrolment divided by all NSTU staff assigned to the school which includes Principals, Vice Principals, Student Services Staff, ESL, etc.)
- Enrolment: 349
- Total Classes: 13
- Number of Combined Classes: N/A
- Class sizes:

Grade 7 3 classes	Grade 8 2 classes	Grade 9 3 classes	Grade 7 FI 2 classes	Grade 8 FI 2 classes	Grade 9 FI 1 class	Total
26, 27, 27	29, 30	28, 28, 27	25, 25	21, 21	35	349

Program	Program Delivery Comments
General Classroom Program	Program is being delivered effectively.
Physical Education	Program is being delivered effectively.
Art	Program is being delivered effectively.
Music	Program is being delivered effectively.
Computer Lab	Computers in classrooms and a computer lab.
Resource Room	Provided in good space.
Specialty Space	Provided in several individual spaces.
Library	Provided in an acceptable space.
Science Lab	Program is being delivered effectively.
Family Studies	Program is being delivered effectively.
Technology Education	Program is being delivered effectively.
Extra Curricular	Over 50 extracurricular activities are offered in a range of areas, including: fine arts, sports teams, leisure activities, math competitions, literacy, leadership, technology, and service activities. Activities occur at lunchtime and after school.
Playground	No grassed or paved exterior play areas.
Field	Grassed HRM playing field just off of school property.
Food services	No cafeteria, students eat in 3 extra classrooms which are used as lunch rooms.

### 3.2 EDUCATIONAL BENEFITS

In general, the ability for a school to staff for specialty programs and extra-curricular activities is enhanced with larger student populations. This can occur because more teaching staff can be allocated to the school in either full time positions or they are in the school for longer periods of time as part of a circuit. While each individual student's exposure to certain subjects is defined by the curriculum offered and is consistent throughout the board, the fact that art, music, gym and French teachers are able to spend more time at a school with larger pupil numbers allows for the teachers to become more familiar with their students, enhances the ability for

extra-curricular offerings and enhances the ability for students with special interests in those subjects to be exposed to the subject(s) in more depth.

**Possible Outcome: Prince Arthur Junior High School remains open.**

Prince Arthur Junior High School is currently delivering the needed educational support services and public school program. However there are extensive maintenance issues and costs associated with keeping this building open.

**Possible Outcome: Prince Arthur Junior High is closed and students attend Bicentennial School.** Bicentennial School is currently a P-9 school with 14 available teaching spaces and an estimated capacity of 678. Combining the two schools would result in a total student population of 577 leaving an additional 6 teaching spaces after all classes have been placed. There is a large HRM playing field (part of the Dartmouth Commons) which is adjacent to the school playground. Bicentennial is located in central Dartmouth approximately 3.0 kilometers from Prince Arthur Junior High.

### 3.3 TRANSPORTATION

**Possible Outcome: Prince Arthur Junior High School remains open.**

Some students are bussed to Prince Arthur based on the current HRSB 3.6 km walking distance.

**Possible Outcome: Prince Arthur Junior High School is closed and students are moved to Bicentennial School.**

Some mandatory bussing would be required to Bicentennial School; however, based on a preliminary review, Stock Transportation has indicated there may be a reduction of mandatory bussing. A more detailed evaluation will be completed.

### 3.4 EXTRA-CURRICULAR ACTIVITIES

It should be noted that the delivery of extra-curricular activities at any school is dependent on the staff at the school in any given year. The special interests and skills of the teaching staff along with their availability to provide extra-curricular activities generally define what is offered. Extra-curricular activities are often offered over lunch periods or after school.

**Possible Outcome: Prince Arthur Junior High School is closed and students are moved to Bicentennial School.**

Former Prince Arthur Junior students and Bicentennial students will be able to continue accessing the extra-curricular activities offered at Bicentennial School, with the potential for enhancement due to the addition of new teachers at that site and the available fields that are part of the Dartmouth Commons.

### 3.5 OPERATIONAL AND CAPITAL REQUIREMENTS

#### 3.5.1 Completed Capital Projects at Prince Arthur Junior High School

- Replace door by caretakers room - \$13,741.38
- Repair Boiler - \$7291.20

#### 3.5.2 Immediate Operating Needs (5 years)

If Prince Arthur Junior High School were to remain open, the following deferred Maintenance and capital upgrades would need to occur over the next 5 years:

- Repair Exterior Walls - \$170,600.00
- Exterior Windows - \$713,000.00
- Roof Coverings - \$560,000.00
- Heat Generation - \$205,000.00

- Electrical Service and Distribution - \$352,000.00
- Code Requirements - \$72,500.00
- Total - \$2,073,100.00

### 3.5.3 Capital Investments on Current Building for 20 Year Building Life

A complete Building Audit and Expenditure Plan has been completed for Prince Arthur Junior High School and will be provided to the School Review Committee. The intent of the document is to provide a review of the existing building and to provide a capital building estimate that would be required for the continued operation of the school. The report concludes that an investment in capital of approximately \$4,315,600.00 is required to ensure the future use of the building for 20 years.

### 3.6 PROPERTY SERVICE EFFICIENCIES

The projected cost savings to the Board for each possible outcome of the review are listed below. Please note that administrative cost savings are not included in the calculations below.

**Possible Outcome:** Prince Arthur Junior High School remains open

	Immediate Capital Costs 5 yr	Long Term Capital Costs 20 yr	Annual Operating Costs	Students	Annual Operating Costs/Student
Prince Arthur	\$2,073,100.00	\$2,242,500.00	\$312,407.29	381	\$819.97
Bicentennial	\$1,109,200.00	\$1,461,400.00	\$259,764.75	258	\$1,006.84
<b>Total Costs</b>	<b>\$3,182,300.00</b>	<b>\$3,703,900.00</b>	<b>\$572,172.04</b>	<b>639</b>	<b>\$895.42</b>
<b>Overall Cost Savings</b>	<b>0</b>	<b>0</b>	<b>0</b>		<b>0</b>

**Possible Outcome:** Prince Arthur Junior High School closes and students attend Bicentennial School

	Immediate Capital Costs 5 yr	Long Term Capital Costs 20 yr	Annual Operating Costs	Students	Annual Operating Costs/Student
Prince Arthur	0	0	0		0
Bicentennial	\$1,109,200.00	\$1,461,400.00	\$259,764.75	639	\$406.52
<b>Total Costs</b>	<b>\$1,109,200.00</b>	<b>\$1,461,400.00</b>	<b>\$259,764.75</b>	<b>639</b>	<b>\$406.52</b>
<b>Overall Cost Savings</b>	<b>\$2,073,100.00</b>	<b>\$2,242,500.00</b>	<b>\$312,407.29</b>		

### 3.7 IMPACT ON THE COMMUNITY

If Prince Arthur Junior High School were to close, the impact on the community surrounding the school would be largely related to the school's proximity and convenience to families that are experiencing socio-economic challenges.

### 3.8 COMMUNITY USE OF THE SCHOOL

From September 2010 to June 2011, the following activities occurred at Prince Arthur Junior High School. Source of this information is the HRSB/HRM Facility Booking database.

Rooms: Classroom

Booked by: Good News Halifax

Dates: September 21, 28  
October 5, 12, 19  
November 20, 30  
March 15, 22, 29  
April 5, 19, 26

Times: 6:00p.m. to 8:00p.m.

Rooms: Gymnasium

Booked by: DLBC Basketball Practice

Dates: September 21, 22, 28  
October 5, 6, 12, 13, 19, 20, 26, 27  
November 3, 9, 10, 16, 17, 23, 24, 30  
December 14, 15, 21  
January 4, 5, 11, 18, 19, 25, 26  
February 1, 8  
March 1, 2, 8, 9, 15, 16, 22, 23, 29  
April 5, 6, 12, 13, 20

Times: 6:00p.m. to 10:00p.m.  
7:30p.m. to 10:00p.m.

Rooms: Gymnasium

Booked by: CHMBA Practice

Dates: September 22, 28  
October 6, 13, 20, 27  
November 3, 10, 17, 24  
December 15  
January 5, 19, 26  
March 2, 9, 16, 23  
April 6, 13, 20, 27

Times: 6:00p.m. to 7:30 p.m.

Rooms: Gymnasium

Booked by: HRSB A.B.A Celtics Practice

Dates: September 27  
October 4, 15, 18, 25, 29  
November 1, 5, 8, 15, 19, 22, 26  
January 7, 10, 14, 17, 24, 28, 31  
February 4, 7, 11, 28  
March 4, 11, 14,  
April 1, 4, 11

Times: 6:00p.m. to 9:00p.m.

Rooms: Gymnasium

Booked by: HSSC Adult Recreation – Andrew White

Dates: January 10, 17, 24, 31

February 7, 28

March 14, 21, 28

April 4, 12, 18

Times: 9:00p.m. to 10:00p.m.

**3.9 IMPACT OF POTENTIAL CONSOLIDATION (IF APPLICABLE)**

N/A

## 4.0 PROPOSED RECEIVING SCHOOL INFORMATION

### 4.1 SCHOOL NAME

Bicentennial School

### 4.2 SCHOOL LOCATION

85 Victoria Road  
Dartmouth, NS B3A-1T9

### 4.3 ADMINISTRATION

Principal: Kim Campbell  
Vice Principal: Jamie Kavanaugh

### 4.4 ENROLMENT

#### 4.4.1 Bicentennial Historical and Projected Enrolments

Actual enrolments are given through 2010 and projected enrolments are provided through 2015. Projections provided by Baragar Demographics.

#### Historical and Projected Enrolments for Bicentennial School

	2006	2007	2008	2009	2010	2011	2012	2013	2014	2015
Primary	15	9	22	15	14	14	23	18	18	14
One	15	12	7	22	17	15	14	24	19	19
Two	17	10	12	7	22	17	15	15	24	19
Three	16	13	12	10	7	21	17	15	14	23
Four	27	11	14	10	8	6	20	15	13	13
Five	14	23	10	13	11	8	5	19	15	12
Six	24	14	24	10	14	11	7	4	18	14
Seven	92	66	51	68	47	50	55	48	56	63
Eight	70	94	66	54	68	48	50	55	48	56
Nine	110	65	84	73	50	64	45	48	52	45
Total	400	317	302	282	258	254	251	261	277	278

Source: Halifax Regional School Board and Baragar Demographics

#### 4.4.2 Bicentennial School In and Out of Boundary Details

##### Students attending Bicentennial School – September 2010

- 212 students living within the Bicentennial School Boundary
- 46 students living in other school boundaries
- Total of 258 students attending Bicentennial as of September 30, 2010

##### Students living in Bicentennial School Boundary – September 2010

- 212 students from the Bicentennial School Boundary attend the school as of September 30, 2010;
- 12 students from the Bicentennial School Boundary attend other schools in English programming as of September 30, 2010
- 93 students from the Bicentennial School Boundary attend other school in French Immersion programming as of September 30, 2010

#### 4.4.3 Bicentennial School Registered Enrolment for September 2011

The following registered enrolments for September 2011 are accurate as of April 30, 2011. The actual September 30, 2011 enrolments will be provided to the School Review Committee in October 2011.

Grade	April 30 <sup>th</sup> 2011 Registered Enrolment for September 2011
Primary	4
One	13
Two	21
Three	22
Four	10
Five	7
Six	12
Seven	51
Eight	45
Nine	65
<b>Total</b>	<b>250</b>

#### 4.4.4 Impact of the Review Outcome on Bicentennial School

If Prince Arthur Junior High School were to close effective September 2012, the entire student population would be assigned to Bicentennial School. Bicentennial School currently delivers the public school program effectively and has the space to provide specialty courses in unused classrooms. Combining the two schools would result in a total student population of 577 leaving an additional 6 teaching spaces after all classes have been placed. There is a large HRM playing field (part of the Dartmouth Commons) which is adjacent to the school playground. Bicentennial is located in central Dartmouth approximately 3.0 kilometers from Prince Arthur Junior High.

#### 4.5 SCHOOL CONFIGURATION

Primary to Grade 9  
Regular English Program

#### 4.6 PHYSICAL CONDITION OF THE BUILDING

##### 4.6.1 Facility Utilization

Capacity: 678  
Enrolment September 30, 2010: 258  
Utilization September 30, 2010: 38%

##### 4.6.2 Condition of Building Structure and Systems

###### Completed Capital Projects at Bicentennial

- Window replacement - \$72,769.00
- Upgrade electrical system – computer system - \$15,000.00
- Removed and disposed sections of cabinet – \$6,423.57
- Wheel chair lift - \$175,616.05
- Replaced zone valve and repaired unit heater - \$5,743.04
- Removed and refinished classroom walls - \$8,726.17

#### Deferred Maintenance and Required Capital Upgrades over the next 5 years

- Exterior Walls - \$144,700.00
- Exterior Windows - \$292,000.00
- Exterior Doors - \$67,100.00
- Roof Coverings - \$605,400.00
- Total - \$1,109,200.00

#### 4.6.3 Costs Associated With Maintenance and Operation

Costs	2009/2010	2010/2011
Utilities		
Phone	\$8,172.00	\$8,172.00
Power	\$35,837.37	30,012.59
Fuel	\$34,914.97	\$36,182.99
Water	\$13,528.67	\$16,189.54
Maintenance	\$12,362.20	\$12,665.20
Caretaker and Supplies	\$152,831.51	\$156,542.43
<b>Total</b>	<b>\$257,646.72</b>	<b>\$259,764.75</b>

#### 4.6.4 Operation and Availability of Accessibility Ramps, Elevators, Accessible Playgrounds

Please refer to the Building Audit and Expenditure Plan

#### 4.7 BUILDING USE

##### 4.7.1 Excess Space

Number of students as of September 30, 2010 = 258

Square footage = 65,100 square feet

#### 4.7.2 Teaching Spaces and Current Usage

Room	Size (sq. ft.)	Intended Use	Current Use
<b>Main Floor</b>			
Classroom 1	695	Classroom	Classroom
Classroom 2	704	Classroom	Classroom
Classroom 3	716	Classroom	Classroom
Classroom 4	711	Classroom	Classroom
Classroom 5	716	Classroom	Classroom
Classroom 6	756	Classroom	Classroom
Classroom 7	711	Classroom	Classroom
Classroom 8	1109	Classroom	Audio Visual room
Classroom 9	701	Classroom	Student support
Classroom 10	706	Classroom	Active living room
Classroom 11	714	Classroom	Computer room
Classroom 12	756	Classroom	Junior high resource
Classroom 13	656	Classroom	Guidance (divided into two spaces)
Classroom 14	751	Classroom	Classroom
Classroom 15	1675	Art Classroom	Lunch room
Classroom 16	446	Classroom	Learning center and office
Classroom 17	748	Classroom	Learning center
Classroom 18	1149	Music Classroom	Classroom
Classroom 19	1179	Library	Library
Gymnasium 20	6394	Gymnasium	Gymnasium
<b>Lower Floor</b>			
Classroom 21	757	Classroom	Classroom
Classroom 22	946	Classroom	Classroom
Classroom 23	779	Classroom	Extra Classroom
Classroom 24	671	Classroom	Extra Classroom
Classroom 25	602	Classroom	Extra Classroom
Classroom 26	800	Classroom	Community Outreach Classroom
Classroom 27	692	Classroom	Literacy room
Classroom 28	566	Classroom	Computer Lab
Classroom 29	733	Classroom Music	Behaviour Team room
Classroom 30	1030	Science Lab	Science Lab
Classroom 31	952	Family Studies	Lunch room
Classroom 32	1342	Family Studies	Breakfast program
Classroom 33	988	Tech Ed Computer Lab	Extra Classroom
Classroom 34	1561	Tech Ed -Woodshop	Not in use.

#### 4.7.3 Impact of Increased Number of Students on Building Usage

Bicentennial has the instructional spaces needed for the proposed total population of 577. The elementary classes would total only 87 and would therefore become a very small percentage of the total school population. This may negatively impact on the 'feel of school' for these students. Junior High classes would total 14 and class sizes would be 21-28 with the exception of the grade 9 French Immersion class which would be 35. If a decision was made to split this into 2 classes there is an instructional space available to accommodate the additional class. The corridors of Bicentennial are wide and are suited to the amount of room junior high students need to

move about. From a maintenance perspective Bicentennial is in relatively good condition and most of the maintenance needed is to the exterior of the building.

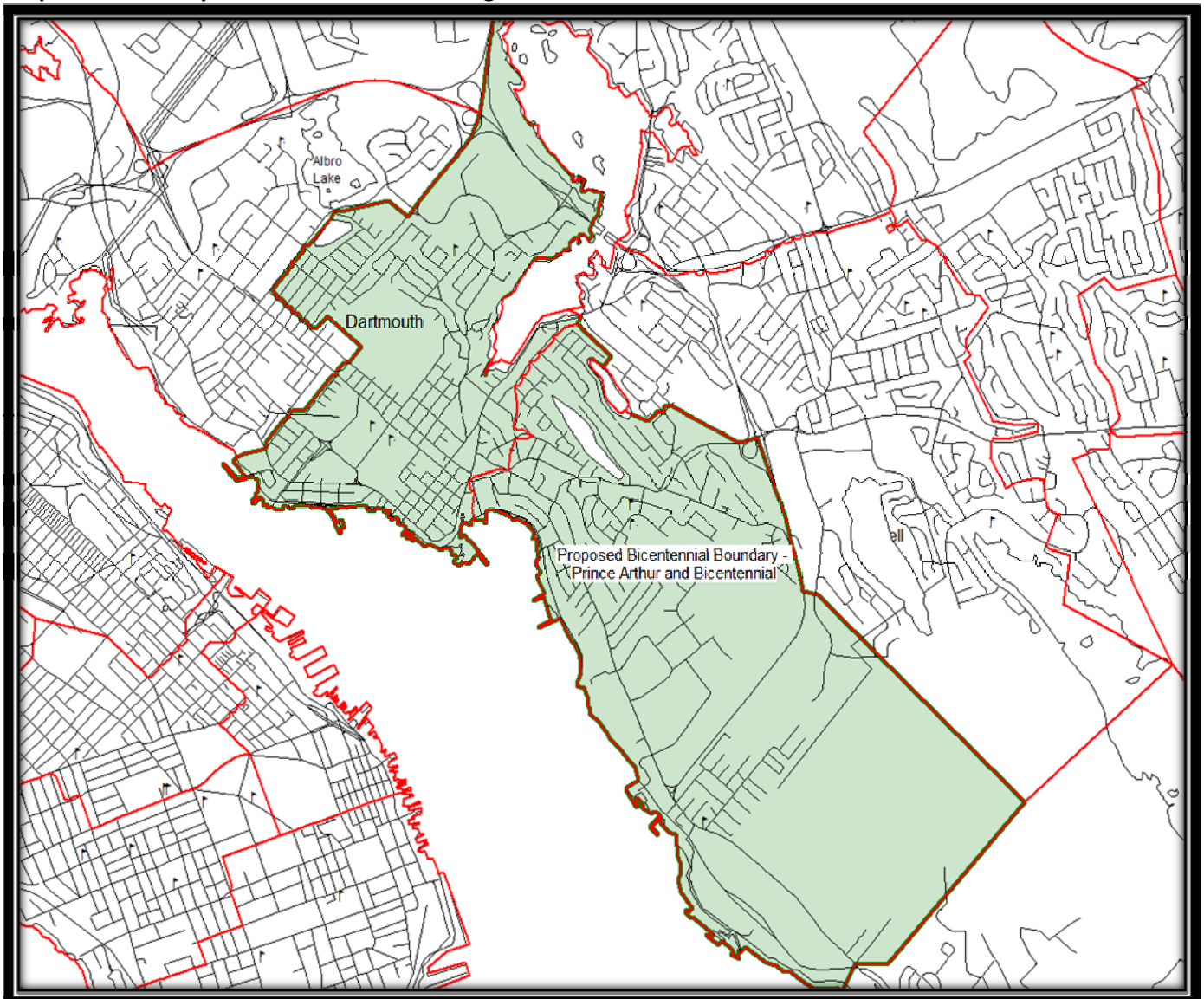
#### 4.8 TRANSPORTATION

Currently, there are no students who qualify for bussing based on distance attending Bicentennial School. The only students bussed are entitled to bussing due to special needs.

#### 4.9 PROPOSED ATTENDANCE BOUNDARY

If Prince Arthur Junior High School were to close with students being redirected to Bicentennial School the new boundary would be as shown below.

**Proposed Boundary of Prince Arthur Junior High and Bicentennial School**



Source: Halifax Regional School Board and Baragar Demographics